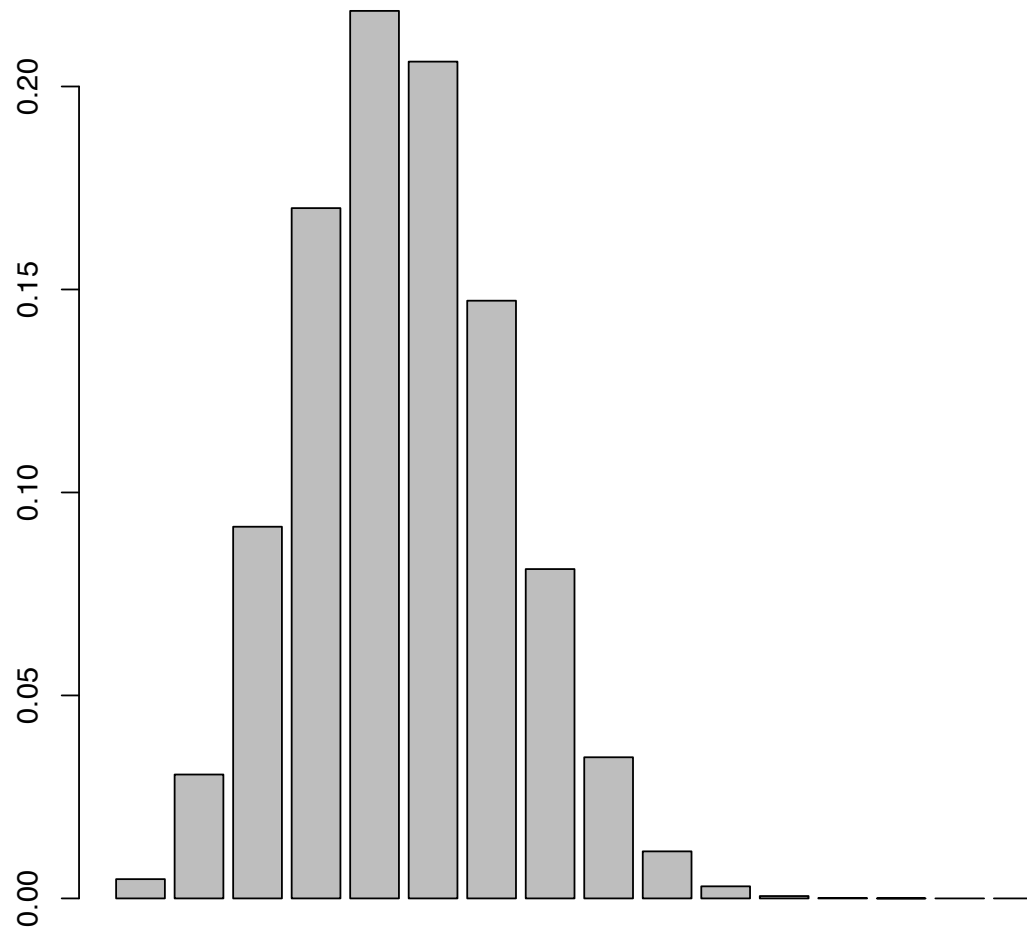


Plan for Week 10 Computer Lab

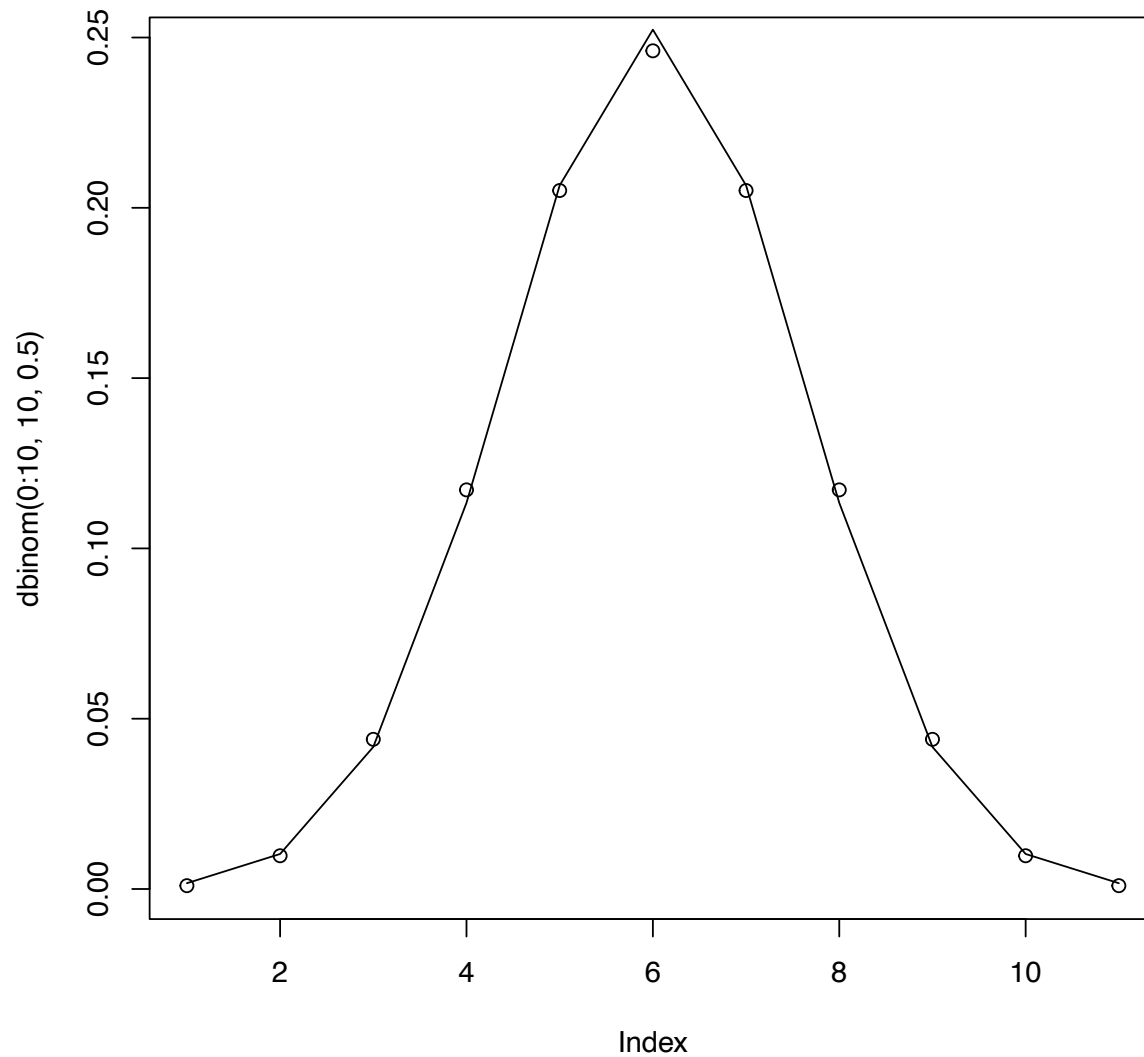
- Please run through the “**R Laboratory 3**” document and try the examples/exercises
- We’ll learn how to use R to:
 1. Generate **binomial** and **Poisson** random variables
 2. Calculate probabilities for a **normal** distribution
 3. Test **approximations** for probability distributions
 4. Compare distributions using **QQ plots**
- **R Assignment 2**: Please complete the quiz by **17 October** (Friday Week 10)

It covers Week 9/10 content and is worth 4% of the unit grade

Plots for Lab 10

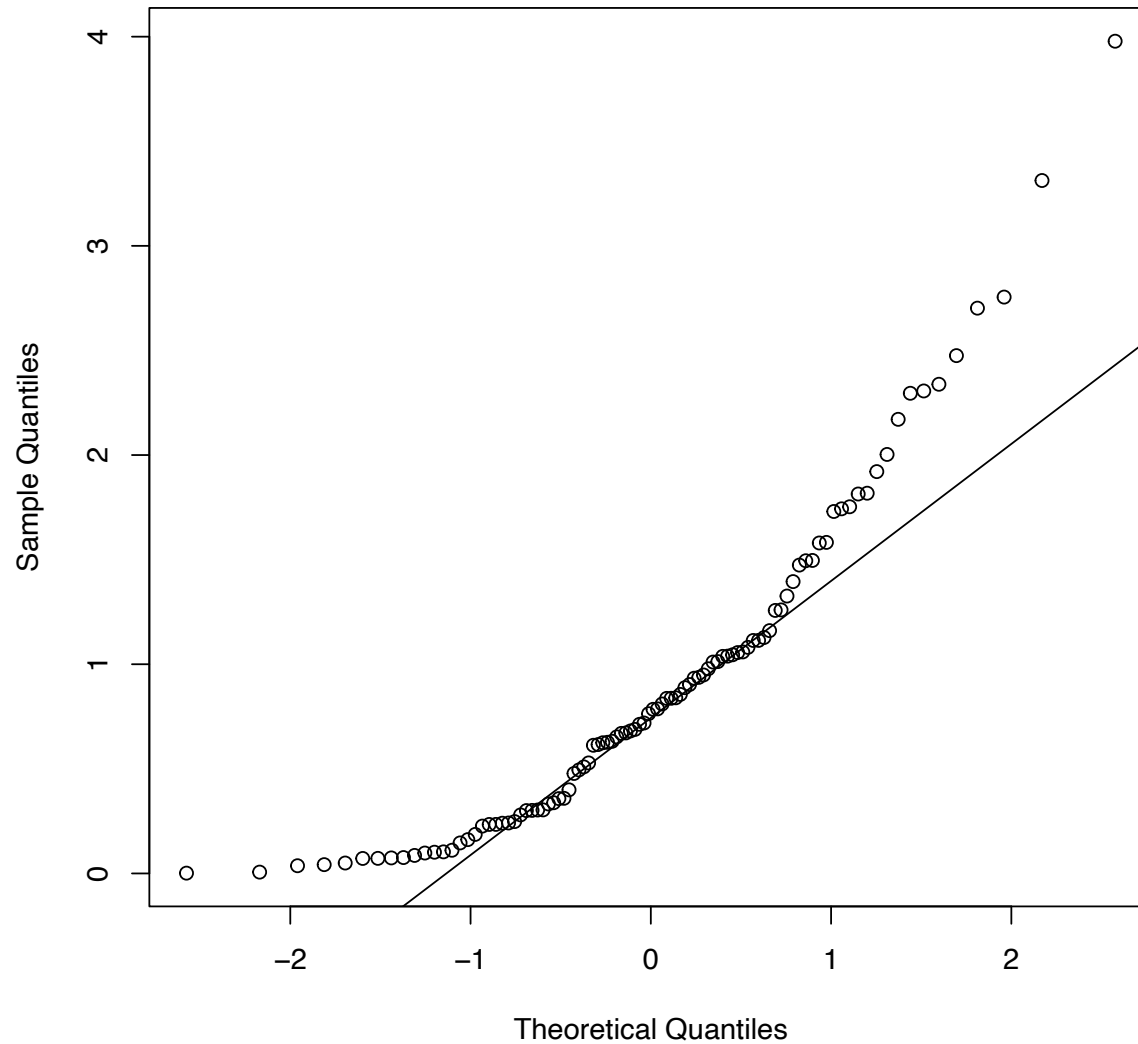


Plots for Lab 10



Plots for Lab 10

Normal Q-Q Plot



Plots for Lab 10

Normal Q-Q Plot

