

Environments and clustering properties of 2dFGRS-selected starburst galaxies

Matt S. Owers,^{1*} Chris Blake², Warrick J. Couch^{1,2}, Michael B. Pracy³, Kenji Bekki¹

¹*School of Physics, University of New South Wales, Sydney, NSW 2052, Australia*

²*Centre for Astrophysics and Supercomputing, Swinburne University of Technology, Hawthorn, VIC 3122, Australia*

³*Research School of Astronomy and Astrophysics, Australian National University, Canberra, ACT 2600, Australia*

Accepted 2007 December 00. Received 2007 December 00; in original form 2007 January 01

ABSTRACT

We investigate the environments and clustering properties of starburst galaxies selected from the 2dF Galaxy Redshift Survey (2dFGRS) in order to determine which, if any, environmental factors play a role in triggering a starburst. We quantify the local environments, clustering properties and luminosity functions of our starburst galaxies and compare to random control samples. The starburst galaxies are also classified morphologically in terms of their broad Hubble type and evidence of tidal merger/interaction signatures. We find the starburst galaxies to be much less clustered on large (5–15 Mpc) scales compared to the overall 2dFGRS galaxy population. In terms of their clustering environments, we find just over half of the starburst galaxies to reside in low to intermediate luminosity groups, and a further ~ 30 per cent residing in the outskirts and infall regions of rich clusters. Their luminosity functions also differ significantly from that of the overall 2dFGRS galaxy population, with the sense of the difference being critically dependent on the way their star formation rates are measured. In terms of pin-pointing what might trigger the starburst, it would appear that factors relating to their *local* environment are most germane. Specifically, we find clear evidence that the presence of a near neighbour of comparable luminosity/mass within 20 kpc is likely to be important in triggering a starburst. We also find that a significant fraction (20–30 per cent) of the galaxies in our starburst samples have morphologies indicative of either an ongoing or recent tidal interaction and/or merger. These findings notwithstanding, there remain a significant portion of starburst galaxies where such local environmental influences are not in any obvious way playing a triggering role, leading us to conclude that starbursts can also be internally driven.

Key words: surveys - galaxies: starburst - galaxies: formation - galaxy: active - galaxies: evolution - galaxies: interaction

1 INTRODUCTION

Identifying and understanding the drivers of galaxy evolution remains one of the most important challenges in modern astrophysics. Whilst the model of hierarchical large scale structure and galaxy formation provides a useful broad framework within which to understand how galaxies form and evolve, the impact of the environment on the evolution of a galaxy remains an important detail that is yet to be fully understood. One approach to gauging environmental influences on galaxy evolution is to obtain large samples of galaxies in the throws of violent evolution enabling searches for statistically significant correlations between the galaxy properties and the environment it lives in. Thanks to large

spectroscopic surveys such as the 2dF Galaxy Redshift Survey (2dFGRS; Colless et al. 2001) and the Sloan Digital Sky Survey (SDSS; York et al. 2000), such large samples are now accessible. Starburst galaxies (galaxies with star formation rates orders of magnitude above their quiescent rates) provide an excellent opportunity to study galaxies during rapid evolution, since the burst is generally expected to have been triggered within the last 500 Myrs or so.

Starburst galaxies are found across the mass spectrum of galaxies, from the massive Ultra Luminous Infrared Galaxies (ULIRGs) to dwarf starbursting galaxies such as the blue compact dwarfs (BCD) and dwarf irregulars (dIrr). There are a number of physical mechanisms proposed for triggering star formation across this broad mass spectrum, some of which are due to intrinsic processes, whilst others are due to environmental interaction. Spiral density waves

* E-mail: mowers@phys.unsw.edu.au

are known to trigger star formation, however this mechanism is probably not strong enough to trigger a massive starburst in larger galaxies, whilst bars are effective at transporting gas to the central regions of a galaxy triggering a circumnuclear burst (Kennicutt 1998). Whilst inadequate or absent in massive galaxies, internal processes such as stochastic self-propagating star formation (Gerola, Seiden & Schulmann 1980) and cyclic gas re-processing (Papaderos et al. 1996) may cause dwarf galaxies to undergo multiple cycles of starbursts and quiescent phases on timescales that are short compared to a Hubble time.

Major mergers of two or more gas-rich galaxies have been shown to produce massive bursts of star formation (Bekki et al. 2001a; Mihos & Hernquist 1996), whilst more than 95 per cent of ultra-luminous infrared galaxies (ULIRGs) are merger systems (see Sander & Mirabel (1996) for a review). Numerous studies have been conducted on the effects of close galaxy pairs on star formation rate (SFR), with the general consensus being pairs with projected separations of less than ~ 50 kpc show enhanced SFRs (Freedman Woods et al. 2006; Nikolic et al. 2004; Lambas et al. 2003). There is evidence that the mass ratio of the pairs may also be important, Freedman Woods et al. (2006) find evidence that pairs with $|\Delta m_R| < 2$ show strong correlations between SFR and projected separation, whilst those with $|\Delta m_R| \geq 2$ show no correlation, consistent with Lambas et al. (2003). These results suggest that tidal interactions and mergers with galaxies of approximately equal mass are important in triggering star formation.

The effects of the cluster environment may trigger starbursts; theoretical studies have shown that it is possible to trigger a starburst due to the high static thermal and ram pressure felt by molecular clouds within a galaxy disc due to the tenuous, hot intra-cluster medium (ICM) (Bekki & Couch 2003), whilst group member galaxies may experience starbursts during the infall process due to the time dependent tidal gravitational field (Bekki et al. 1999). The above mechanisms can be tested observationally, since the different triggering mechanisms are expected to produce different spatial distributions of the starburst across the galaxies. Much observational work has been carried out on the fractions of the types of galaxies residing in clusters, and on the populations in major cluster mergers. Photometric studies revealed significant evolution of the blue population with redshift (the Butcher-Oemler effect, Butcher & Oemler (2004)). Subsequent spectroscopic studies revealed the effect was mostly caused by galaxies which had undergone a burst of star formation between 0.1 and 1.5 Gyrs prior to the epoch of observation (Couch & Sharples 1987).

At the low mass end of starburst galaxies are the blue compact galaxies (BCG) where much work has been carried out in order to determine triggering mechanisms. Pustilnik et al. (2001) find that a significant fraction (~ 80 per cent) of a sample of 86 BCDs either have neighbours close enough to induce strong tidal forces, or display a disturbed merger morphology, implying that interactions are important in triggering starbursts in BCDs. Noeske et al. (2001) draw a similar conclusion from a sample of 98 star forming dwarf galaxies, finding a lower limit of ~ 30 per cent harbour close neighbours, whilst Taylor (1997) find the rate of companion occurrence in HII galaxies is ~ 57 per cent, more than twice the rate of companions in a comparison sample of low sur-

face brightness galaxies. However, Brosch (2004) find that in a sample of 96 BCG and dIrrs imaged in H α , there is not a significant number of star forming companions, concluding that tidal triggering is probably not important in enhancing star formation in these galaxies. Based on the observation that the star formation seems to be occurring at the outer boundaries of the dIrrs, Brosch (2004) propose a ‘sloshing’ mechanism for triggering the star formation, where gas oscillates within the dark matter halo, producing gas build up at locations where the gas ‘turns around’ providing a trigger for star formation. In any case, the triggering mechanism for these dwarfs is still under much debate.

Also of relevance in this context is the population of post-starburst galaxies, first discovered in distant clusters and called ‘E+A’ galaxies by Dressler & Gunn (1982, 1983). These galaxies are known as post-starburst galaxies, since their rather enigmatic spectra - characterized by a strong A-type stellar spectrum superimposed upon a normal E galaxy type spectrum and devoid of any emission lines - would indicate they have undergone a recent burst of star formation that was abruptly truncated within the last 1 Gyr (Couch & Sharples 1987, Poggianti et al. 1999). Subsequent studies have shown that E+A galaxies are also found in a variety of environments at lower redshifts (e.g. Zabludoff et al. 1996), and of particular note is the 2dFGRS-based study by Blake et al. (2004). They identified all the E+A galaxies within the 2dFGRS and studied their local and global clustering environments in an attempt to pin-point what might have triggered the original starburst. They concluded that the environments of E+A galaxies do not differ significantly from that of the general 2dFGRS galaxy population as a whole. However, the morphologies are consistent with a merger origin, and hence the triggering/cessation mechanism for the initial burst is likely to be driven by very local encounters. Simulations have shown that the E+A signature marks the late stage of a galaxy-galaxy merger (Bekki et al. 2001b) where the merging companions are no longer separable. The next logical step, therefore, is to study the environments of the starburst galaxies, which are thought to be the progenitors of E+A galaxies.

Motivated by this need and the broader issues outlined above as to what mechanisms are responsible for triggering starburst events, this paper reports a systematic study of the environments and clustering properties of the starburst galaxies within the 2dFGRS, that very much parallels the E+A study by Blake et al. (2004). We select two starburst samples, using complementary star formation rate determinants, with each sample containing 418 galaxies. This allows measurement of statistical properties of the starburst population, such as the luminosity function, near neighbour properties, morphological distribution and large scale clustering. The paper is organised as follows: In Section 2 we briefly introduce the 2dFGRS and describe the selection criteria for our starburst samples. In Section 3 we use the Supercosmos Sky Survey (hereafter SSS) images to study the morphologies of our samples. In Section 4 we measure the b_J band luminosity function. In Section 5 we investigate the small scale environment surrounding the starbursts. In Section 6 we measure large scale environmental properties of the sample. In Section 7 we summarise and discuss our findings. Throughout this paper, we assume a standard Λ CDM cosmology where $\Omega_m = 0.3$, $\Omega_\Lambda = 0.7$ and

$h = H_0/(100\text{km s}^{-1}\text{Mpc}^{-1}) = 0.7$. We convert redshifts to physical distances using these parameters.

2 SAMPLE SELECTION

2.1 The 2dF Galaxy Redshift Survey

Our starburst samples were selected from the final release of the 2-degree Field Galaxy Redshift Survey (2dFGRS), a large spectroscopic survey conducted at the Anglo-Australian Telescope using the Two-Degree Field (2dF) multi-fibre spectrograph. The 2dF instrument is capable of simultaneously observing 400 objects over a 2° diameter field of view. The survey consists of $\sim 220,000$ galaxies covering an area of approximately $2,000 \text{ deg}^2$ in three regions: a South Galactic Pole (SGP) strip, a North Galactic Pole (NGP) strip and a series of 99 random fields dispersed around the SGP. The input source catalogue for the 2dFGRS was derived from an extended version of the Automated Plate Measuring (APM; Maddox et al. 1990a, b, c; Maddox, Efstathiou & Sutherland 1996) galaxy catalogue based on APM machine scans of 390 plates from the UK Schmidt Telescope (UKST) Southern Sky Survey. The extinction corrected survey limit was $b_J = 19.45$ and the median redshift is $\bar{z} = 0.11$. The spectra are collected through 2 arcsec fibres, cover the wavelength range $3600 - 8000 \text{ \AA}$, have two-pixel resolution of 9.0 \AA and a median S/N of 13 pixel^{-1} . The large range in wavelength is made possible by the use of an Atmospheric Dispersion Compensator (ADC) within the 2dF instrument. Redshift determinations are checked visually and allocated a quality parameter, Q , ranging from 1 to 5. Redshifts with $Q \geq 3$ are regarded as reliable at the 98.4 per cent level. The rms uncertainty of the redshifts is 85 km s^{-1} . The spectra are not flux calibrated and consist of a sequence of ‘counts’ as a function of wavelength. The 2dFGRS data base can be accessed at <http://www.mso.anu.edu.au/2dFGRS>.

2.2 The 2dFGRS spectral line catalogue

We used the 2dFGRS spectral line catalogue prepared by Ian Lewis to select our samples. The fitting procedure is described in detail by Lewis et al. (2002). Here we briefly outline the fitting procedure as follows: The continuum in the vicinity of each spectral line was removed by subtracting the median level over a 133 \AA window. Gaussian profiles were fitted for up to 20 lines per spectrum in both emission and absorption, with the height, width and a small perturbation in redshift (always $\Delta z < 0.005$) as free parameters. After fitting, the quality of the fit was determined using the parameters obtained from the fit (height, width and area) and the rms residuals. A quality flag was assigned to each line fit in the range 0 (bad fit) to 5 (good fit) and a signal to noise parameter was calculated for each line (relative to the continuum). Equivalent widths (EWs) were calculated using the measured flux in the line and the fitted continuum level (in the 133 \AA window local to the line). The EWs can be used in line ratio diagrams without the need for flux calibration. However, it is assumed there is no significant flux contribution to the continuum level from effects such as scattered light. We correct for broadening of the spectral

lines due to cosmological redshift by dividing the EWs by $1+z$, where z is the galaxy redshift.

2.3 Selection of emission line galaxies

In order to select a high quality sample of starburst galaxies, we first ensured the parent catalogue consisted of single observations of galaxies with high quality spectra. Thus, we kept only spectra with:

- $\text{ADC} = 1^1$
- 2dFGRS redshift parameter, $Q \geq 3$
- $z \geq 0.002$ to exclude stars.

The parent 2dFGRS spectral line catalogue contains 264,765 spectra, and the exclusion of those objects failing the above criteria reduced this to 172,427 spectra. We then included only the highest quality spectra of the multiply observed objects based on the redshift quality flag or the highest S/N (if the redshift quality flags were equal), leaving a parent catalogue of 162,529 high quality spectra with no multiple observations.

From this catalogue, we selected a sample of emission line galaxies from which a sub-sample of star forming galaxies was selected. It is standard practice to differentiate star forming galaxies from narrow-emission-line AGNs according to their position on the BPT diagram (Baldwin, Phillips & Terlevich 1981), where the logarithm of the ratio's of $[\text{OIII}]/\text{H}\beta$ and $[\text{NII}]/\text{H}\alpha$ are plotted. With this in mind, we selected galaxies with $\text{EW} \geq 2.5$ in emission and a line fit quality flag ≥ 4 for the following species: $\text{H}\alpha$, NII , OIII and $\text{H}\beta$. The cut of $\text{EW} \geq 2.5$ is arbitrary, but ensures a robust line detection for use in the line ratio diagram. We detected 9,516 emission line galaxies that conform to the above criteria; Figure 1 shows them plotted in the BPT diagram. The advantage of the chosen lines for the ratios plotted is twofold. Firstly, the lines are close together in wavelength space, hence extinction due to dust has little effect on the calculated ratios. Secondly, as seen in Figure 1 the plot of the ratios show two distinct populations on the $[\text{OIII}]/\text{H}\beta - [\text{NII}]/\text{H}\alpha$ plane, the origin of which lies in the different physical mechanisms providing the photo-ionizing continuum. For AGNs, the ionizing radiation is non-thermal in nature and is well approximated by a power law, whilst the ionizing radiation in star-forming galaxies is in the form of UV radiation emitted by hot OB type stars (see Veilleux & Osterbrock (1987) for a detailed description). The empirically derived starburst/AGN classification line of Kauffmann et al. (2003) was used to select a sample of galaxies which have emission dominated by star-formation (although we note there may be a small contribution to emission line strength due to AGN emission) such that a star forming galaxy is one which has

$$\text{Log}\left(\frac{[\text{OIII}]}{\text{H}\beta}\right) < \frac{0.61}{\text{Log}([\text{NII}]/\text{H}\alpha) - 0.05} + 1.3. \quad (1)$$

This sample contains 8,369 galaxies from which our starburst samples are selected.

¹ Prior to August 1999, the ADC suffered positioning problems resulting in the blue end of each spectrum being severely depleted of counts. All spectra obtained during this period have been assigned ADC flag = 0

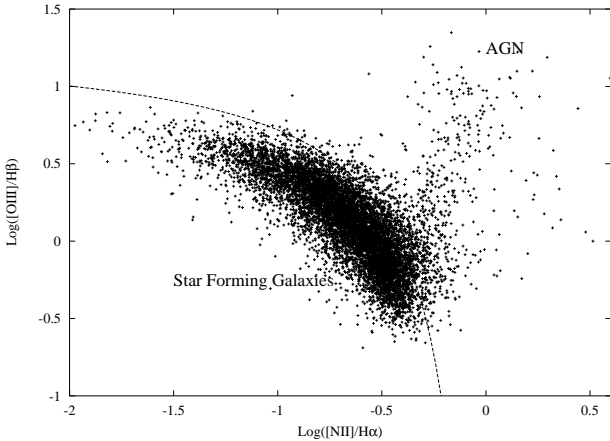


Figure 1. BPT emission line ratio diagnostic diagram, with all the 2dFGRS emission line galaxies plotted as *dots*. The *solid line* represents the empirically derived star formation/AGN demarcation line. Due to the non-thermal mechanism for the underlying photo-ionising continuum, AGNs inhabit a different region of this diagram compared to star-forming galaxies, as can be seen by the plume of galaxies to the *upper right*. Galaxies residing in this plume are excised from our sample as their emission is not due to star formation.

It is pertinent to note here that the 2dFGRS fibres cover only a 2-2.16 arcsec angular diameter on the galaxies (4kpc at the median 2dFGRS redshift of $\bar{z} = 0.11$), and our sample will not contain galaxies where star formation is not occurring within the area covered by the fibre aperture. However, the mean RMS error in the fibre positioning was 0.3 arcsec, whilst the seeing was of the order 1.5-1.8 arcsec, hence the observed spectra cover a larger fraction of the galaxy once these effects are accounted for, and the aperture effect is somewhat diluted. We also note that since we do not obtain the total $H\alpha$ flux of each galaxy, accurate total star formation rates cannot be derived. Kewley et al. (2005) showed that properties such as total aperture corrected SFRs derived from 2dFGRS spectra would be most affected at $z < 0.06$, whilst Hopkins et al. (2003) found that those galaxies with the largest aperture corrections (ie. those with the largest angular size) had their $H\alpha$ SFRs slightly overestimated when compared to the 1.4GHz SFRs. Thus, we expect galaxies at lower redshifts will have their aperture corrected $H\alpha$ SFRs slightly overestimated. In section 2.4.2 we attempt to correct for this and other redshift dependencies by binning the data in redshift space when selecting our starburst sample. The combination of redshift binning and the selection of only the most extreme galaxies in SFR per redshift bin should serve to minimize the aperture effect, although we note there may be some contamination in our sample.

Figure 2 shows that the $H\alpha$ EW (hereafter $W_{H\alpha}$) does not show any trends with redshift in the range $0.04 < z < 0.16$. However, we find evidence of a slight increase in the lowest redshift bin ($0.002 < z < 0.04$) with the median $W_{H\alpha}$ increasing from 40 to 60. This increase is due to low mass emission line systems such as HII regions and dwarf starbursting galaxies which, due to their low luminosity, would not be detected at higher redshifts. Interestingly, Mateus & Sodre (2004) find no trends in $W_{H\alpha}$ with redshift out

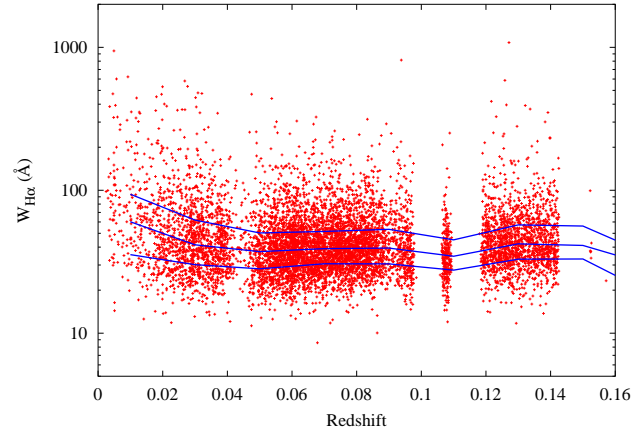


Figure 2. Plot of $W_{H\alpha}$ as a function of redshift. The *solid lines* show (from bottom to top) the first, second (median) and third quartiles. They show that there is no appreciable trend with redshift, apart from at low redshifts where the turn-up in $W_{H\alpha}$ is possibly due to contamination by extra-galactic HII regions and dwarf starbursting galaxies that are not detected at higher redshifts.

to $z=0.05$. $W_{H\alpha}$ is a relative quantity meaning the effect of aperture depends only on the spatial distribution of $H\alpha$ EW in the galaxy. We assume this distribution is uniform and we make no attempt to correct for aperture in the starburst sample in Section 2.4.1. We note there will be contamination of our sample due to HII regions, however this contamination is negligible and makes up only 1.6 per cent of the sample selected in Section 2.4.1.

2.4 Starburst Galaxy Selection Criteria

Starburst galaxies are generally defined by their extremely high star formation rates (SFR), such that if the SFR was sustained, the gas reservoirs feeding the burst will be exhausted in timescales much shorter than the Hubble time, typically of the order of 10^8 yrs. The problem then becomes selecting observable quantities that adequately fit the above definition. In general, an observable quantity is converted into an SFR via some theoretical model which makes various assumptions. Some examples of these observables are: $H\alpha$ luminosity, infrared luminosity, radio emission, a galaxies position on the OII- $H\delta$ plane, OII luminosity, UV luminosity etc (see eg. Sullivan et al. (2001); Kennicutt (1998); Hopkins et al. (2003)). A galaxy is then generally defined as a starburst based on some arbitrary cutoff in absolute SFR, SFR per unit area or the Scalo b-parameter (ie. the ratio of current to average past SFR). Below we describe two samples selected from the emission line galaxies above using one approach equivalent to measuring the b-parameter and one equivalent to measuring the absolute SFR.

2.4.1 Normalized Star Formation Rate Sample

The first method employed to estimate the SFR of the emission line galaxies selected above uses the method of Lewis et al. (2002) to determine a normalized SFR, μ^* , defined by

$$\mu^* = \eta W_{H\alpha} L^*, \quad (2)$$

where $\eta = 8.2 \times 10^{-42} \text{ M}_{\odot} \text{ yr}^{-1} \text{ s}$ is the conversion from $L_{H\alpha}$ to SFR (Sullivan et al. 2001), $L^* = 1.1 \times 10^{40} \text{ ergs}^{-1} \text{ \AA}^{-1}$ is the luminosity corresponding to the knee in the r' band as determined by Blanton et al. (2004) and $W_{H\alpha}$ is the equivalent width of the $H\alpha$ emission line ($W_{H\alpha} \approx L_{H\alpha}/L_c$, L_c is the continuum luminosity). The SFR measured in this way gives a SFR normalized to L^* . A 1 \AA correction is made to $W_{H\alpha}$ to account for stellar absorption (Hopkins et al. 2003). Thus the SFR normalized to L^* is given by $\mu^* = 0.0902(W_{H\alpha} + 1)$.

It is not clear where the dividing line between a normal star forming galaxy and a starbursting galaxy can be drawn using this method for determining the SFR, hence we arbitrarily defined our starburst sample to be the top 5 per cent of galaxies in terms of their μ^* values; hereafter we refer to this as our SFRNORM sample. This corresponds to a cut at $\mu^* = 9.6 \text{ M}_{\odot} \text{ yr}^{-1}$, or a $W_{H\alpha}$ of $\sim 106 \text{ \AA}$. $W_{H\alpha}$ is essentially a measure of the ratio of the SFR to the mass of the old stellar population, and it correlates strongly with the scale b-parameter (Kennicutt et al. 1994). The lower limit on b corresponding to our $W_{H\alpha}$ is ~ 2 (using Table 1 of Kennicutt et al. (1994) with a Salpeter IMF). Since quiescent disks have $b \sim 0.5$, this seems a reasonable cutoff value to delineate starbursts (Kennicutt et al. 2005).

2.4.2 Total Star Formation Rate Sample

It is common to flux calibrate spectra using broad band photometry. We used r_F magnitudes obtained from the SSS to estimate the continuum level at the wavelength of $H\alpha$. The r_F magnitudes were K-corrected to their rest frame values using equation 37 of Wild et al. (2004) and the K-corrected values were converted to r_{AB} magnitudes with equations A12 and A16 of Cross et al. (2004). We use equation 15 of Blanton et al. (2004) to derive the continuum luminosity, $L_{cont} = 4.18 \times 10^{24} \text{ W \AA}^{-1} \times 10^{-0.4M_{AB}}$ where M_{AB} is the absolute AB magnitude and the corresponding effective wavelength for the r_{AB} band is $\lambda_{eff} = 5595 \text{ \AA}$. The $H\alpha$ luminosity is then derived from L_{cont} and the $H\alpha$ equivalent width such that $L_{H\alpha} = 2.5L_{cont} \times (W_{H\alpha} + 1)$, where ($W_{H\alpha}$) is corrected by 1 \AA to allow for the negative contribution of stellar absorption (Hopkins et al. 2003) and the factor of 2.5 corrects for ~ 1 magnitude extinction of the r_{AB} magnitude due to dust extinction, consistent with the extinction measured at $H\alpha$ by Kennicutt (1983) and Niklas, Klein & Wielebinski (1997). The star formation rate (SFR) is related to $L_{H\alpha}$ by $\text{SFR}(\text{M}_{\odot} \text{ yr}^{-1}) = 8.2 \times 10^{-35} L_{H\alpha} (W)$ (Sullivan et al. (2001), eqn. 1). The discrepancy between the effective wavelength of the r_{AB} band and the wavelength of the $H\alpha$ emission should not have a large effect on our measured SFRs since the gradient of the continuum at these wavelengths is close to zero. This method effectively corrects for aperture effects, assuming the $W_{H\alpha}$ is constant across the galaxy (see Hopkins et al. (2003)), hence it is equivalent to measuring the total absolute SFR, hereafter referred to as SFRTOT.

Figure 4 shows the dependence of the SFRTOT values on redshift. There exists a strong correlation with redshift, part of which can be explained by a combination of the survey magnitude limit, and a lower cut-off in $W_{H\alpha}$ at around 20 \AA . This produces an effective limit in the SFR observed

with redshift. It is also known that below $z \sim 0.06$, aperture effects cause discrepant measures of SFR using this method (Kewley et al. 2005; Hopkins et al. 2003). We attempt to nullify any redshift dependency by binning the sample in redshift space, such that each redshift bin contains 500 galaxies (to ensure equal statistical weight), and selecting the galaxies in the top 5 per cent of the SFRTOT distribution within each bin. This serves to select the most extreme star-forming galaxies in each redshift bin, and hence defines our second ('SFRTOT') starburst sample. Figure 4 shows the cutoff in SFRTOT for each bin where the gaps correspond to redshifts where emission lines used in the selection criteria are shifted into areas where sky emission/absorption lines dominate the spectra, producing bad line fits meaning these galaxies are rejected during the selection process.

2.4.3 Pristine SFRTOT starburst sample

The above samples select out starburst galaxies based on the SFR derived from $H\alpha$ alone. The advantage here is that $H\alpha$ is less affected by dust than bluer lines such as $H\delta$ and OII - both common tracers of recent star formation. Thus in the above, there is no restriction placed on the $H\delta$ and OII lines. This means we are not biased against selecting 'dusty' starbursts which have their emission at bluer wavelengths heavily attenuated. However, this also means we may be selecting out older starburst galaxies which have been forming stars at a high rate for a several hundred million years. Indeed, it was noticed that a high proportion of the SFRTOT sample had $H\delta$ in absorption. This may mean we are selecting a combination of both dusty starbursts and older starbursting systems. To test for any effect this may have, we have selected a sub-sample from the SFRTOT sample with the criteria that $H\delta$ is either in emission ($EW \geq 0$ and quality flag ≥ 4) or is not detected in absorption or emission (its quality flag is 0), and hence the nebular emission is dominating the stellar absorption. This ensures we are selecting a sample where the majority of the light emitted comes from a starburst that started ~ 200 Myrs ago (Balogh et al. 1999), hence we are more likely to find evidence of a triggering mechanism. This added selection criteria produces a sub-sample of 244 galaxies within the SFRTOT sample, which we will call the SFRTOT+ sample. In the following analysis, we present results for the extra sub-sample in addition to the main SFRTOT sample. A sub-sample of the SFRNORM sample using the above criteria will not be presented, since 97 per cent of the SFRNORM galaxies meet the above criteria.

3 MORPHOLOGIES

Of relevance to our study is the morphology of our different samples of starburst galaxies and, in particular, whether there is direct evidence that mergers and tidal interactions are responsible for driving the starburst activity. All the galaxies in our SFRNORM and SFRTOT starburst samples were therefore morphologically classified by one of us (W.J.C.) by visual inspection of blue (b_j) and red (r_F) images obtained from the SSS. The SSS has digitised sky survey plates taken with the UK Schmidt telescope, with a pixel size of 0.67 arcsec . The data were accessed using the website

[h]

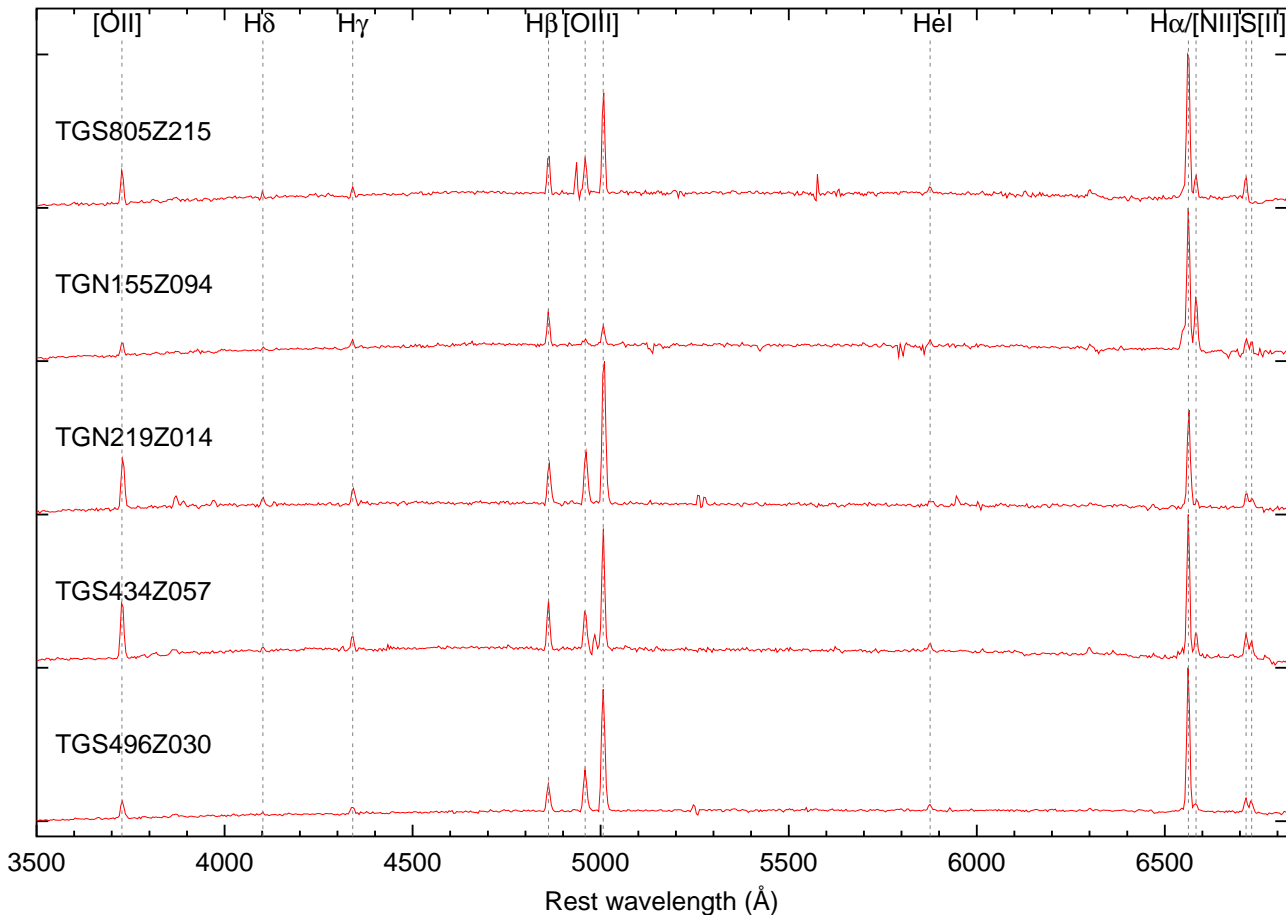


Figure 3. Example spectra for starburst galaxies within our SFRNORM sample (see Fig. 7 for corresponding SSS images). The wavelength scale is in the galaxy rest frame. Prominent night-sky emission lines or absorption features have been excised and interpolated over. *Dashed vertical lines* show the positions of prominent spectral features.

<http://www-wfau.roe.ac.uk/ss/pixle.html>. A description of the SSS is given by Hambly et al. (2001).

The scheme used to morphologically classify our starburst samples was as follows: The first step was to try and assign a basic Hubble type to each galaxy. In doing so, the following five broad categories were used: E or S0 (E/S0), early-type spiral (SE), medium-type spiral (SM), late-type spiral (SL) and irregular (Irr). Using these broader categories, rather than attempting to use all the individual Hubble types (Sa, Sab, Sb, etc), was considered to be sufficient for our purposes and really all that was practical given the limited quality and resolution of the SSS images. The numbers of galaxies classified into each of these five morphological bins are plotted in histogram form in Figure 6 and listed as percentages in Table 1, for both the SFRNORM and SFR-TOT samples. We see that both samples have a broad mix of morphologies, with no one type being dominant. Only in the SFR-TOT sample do we see the absence of a particular morphological class, which somewhat surprisingly is the Irr types.

Whilst the majority of galaxies in both samples could be assigned a Hubble type, there were nonetheless a subset of galaxies where this was not possible. Such galaxies

fell into one of two cases: (i) They were sufficiently well resolved to discern their structure, but that structure was so peculiar that it did not resemble any of the Hubble types. These cases are denoted ‘Pec’ in Figure 6 and Table 1, where it can be seen that they represented only 2 – 3 per cent of each sample. (ii) They were too small to be resolved and hence be classified. Notably, we only encountered galaxies of this type - which we denote as ‘Comp’ (for compact) - in the SFRNORM sample, where they account for 16 per cent of these types of starburst galaxies. The ‘Comp’ classified galaxies can be separated into two groups: (i) The low redshift ($z < 0.05$) galaxies who’s compact nature, conspicuously blue colours (as seen on the SSS images), and their generally faint, ‘dwarf’-like luminosities ($M_{b_j} > -18$), suggest they are most likely blue compact dwarf (BCD) galaxies (Thuan & Martin 1981). (ii) Those galaxies with $z > 0.05$ and $M_{b_j} < -18$ where the SSS images are simply not of high enough quality to assign a Hubble type.

The second step of our morphological classification process was to assess the images for evidence of on-going or recent merger and/or tidal interaction activity. To be classified as an on-going merger, a galaxy had to exhibit clear visual evidence of it coalescing with another, as manifested by the

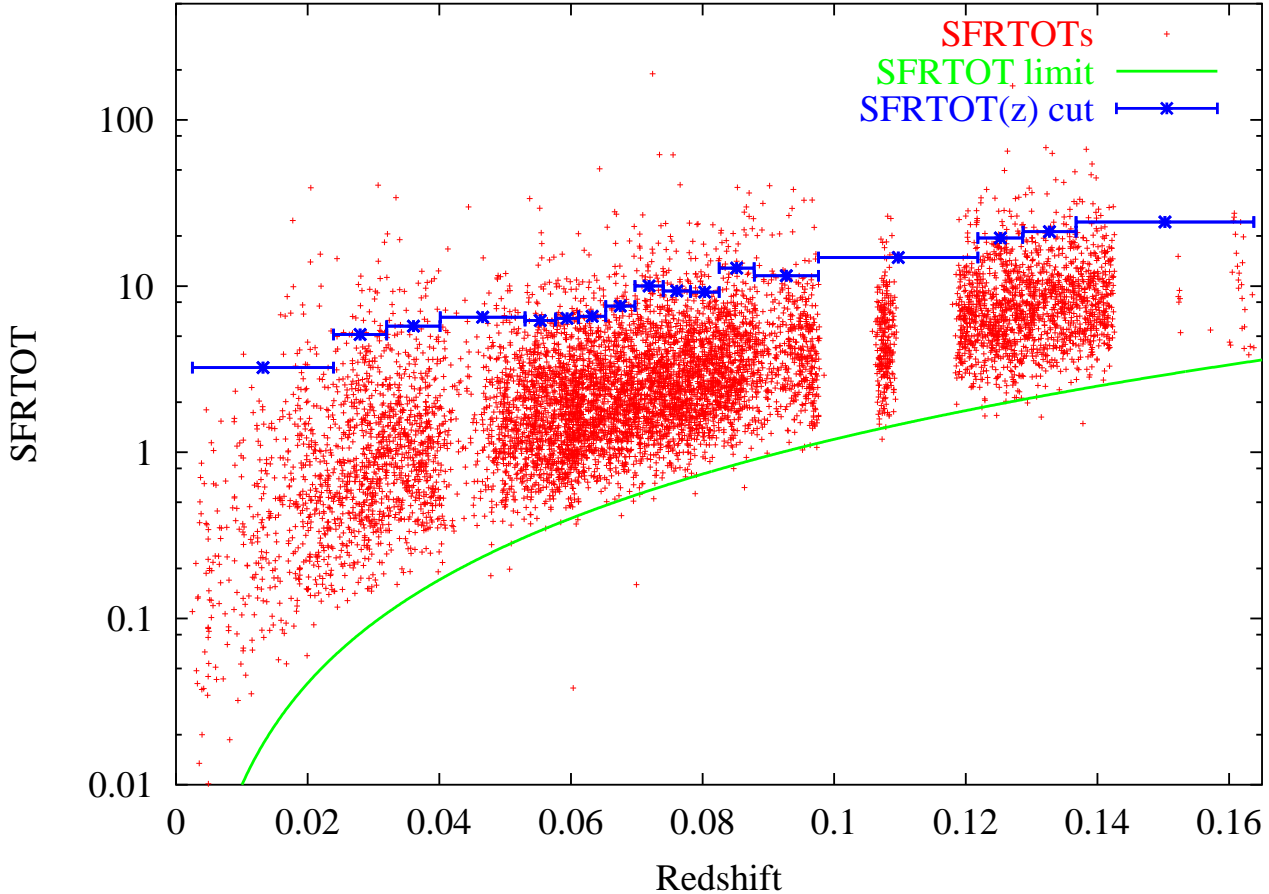


Figure 4. Plot of the total star formation rates (SFRTOT) measured for the 2dFGRS galaxies versus redshift. The *green* line indicates the effective SFR limit derived from the apparent r_F band magnitude limit and $W_{H\alpha} \sim 20$ corresponding to approximately the lowest measured $W_{H\alpha}$ in the star forming sample. The *blue* horizontal bars indicate our binning of the data in redshift (to ensure equal statistical weight to each bin) with their vertical height indicating the top 5 per cent cutoff for defining our SFRTOT starburst sample.

presence of tidal bridges and/or arms. Similarly, to be classified as being involved in a tidal interaction, a galaxy had to show clear signs of a tidal link (via a bridge or arm) with another galaxy. As such, we mainly identified what would be called ‘major’ mergers/interactions (where the two galaxies involved have similar luminosities), given that it is only these types that are sufficiently conspicuous to satisfy the rather conservative visibility criterion that we took. Finally, evidence of a recent merger or interaction was inferred from the presence of tidal tails, shells or debris. This was by far the most difficult and subjective classification to make. Indeed, sometimes the evidence for a merger or interaction, while being highly suggestive, was not always totally convincing, and such cases were placed into a second category called ‘Possible Merger/Interaction’.

The numbers of starburst galaxies classified as mergers/interactions in this way are shown by the dark shaded histograms in Figure 6 and listed as percentages in the last two columns of Table 1. Importantly, we find that a significant fraction of our starburst galaxies are involved in on-going or recent mergers and interactions. The highest number is found in the SFRTOT sample where 28 per cent of the galaxies are classified as mergers/interactions, with a further 6 per cent possibly being in this category. The same

percentages for the SFRNORM sample are 16 per cent and 6 per cent, respectively. While these percentages are significant and hence identify the mechanism likely for triggering the starburst in somewhere between a fifth and a third of the cases, the fact nonetheless remains that the majority (70 – 80 per cent) of the galaxies must have had their starbursts triggered in some other way. Here our visual inspection of all our objects provided a possibly important additional clue. While many of our starburst galaxies were isolated galaxies (no near neighbour within the 1 arcmin on a side SSS images used for our morphological classifications), the number that were in crowded fields with one or more very close neighbours was even more striking. Hence an important part of our analysis is to examine the ‘local’ environments of our starburst galaxies and rigorously quantify whether such visual impressions are significant and determine whether the presence of a bright or faint neighbour is of any relevance in searching for other starburst trigger mechanisms (see Section 5).

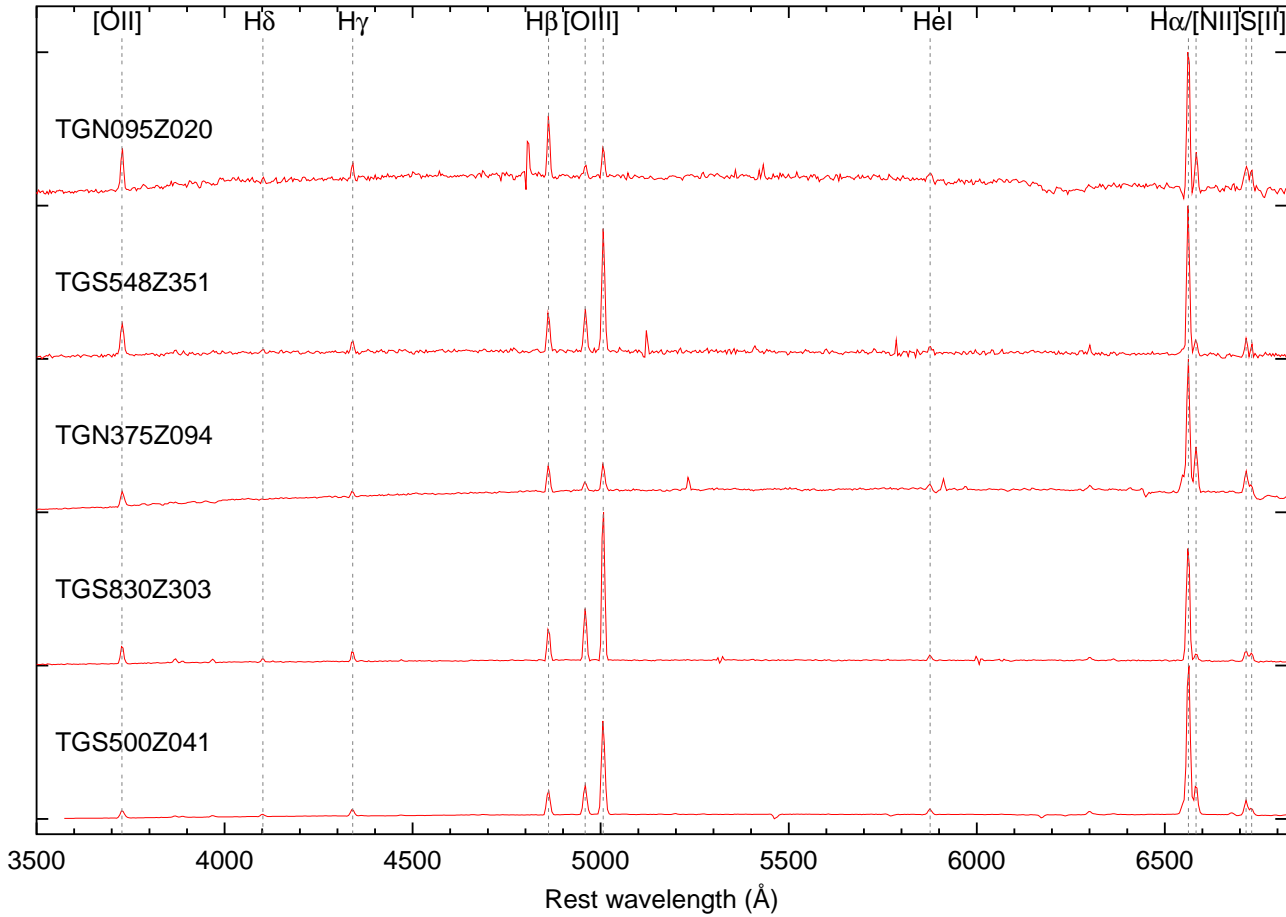


Figure 5. Example spectra of starburst galaxies in our SFRTOT sample, displayed in the same manner as Fig. 3.

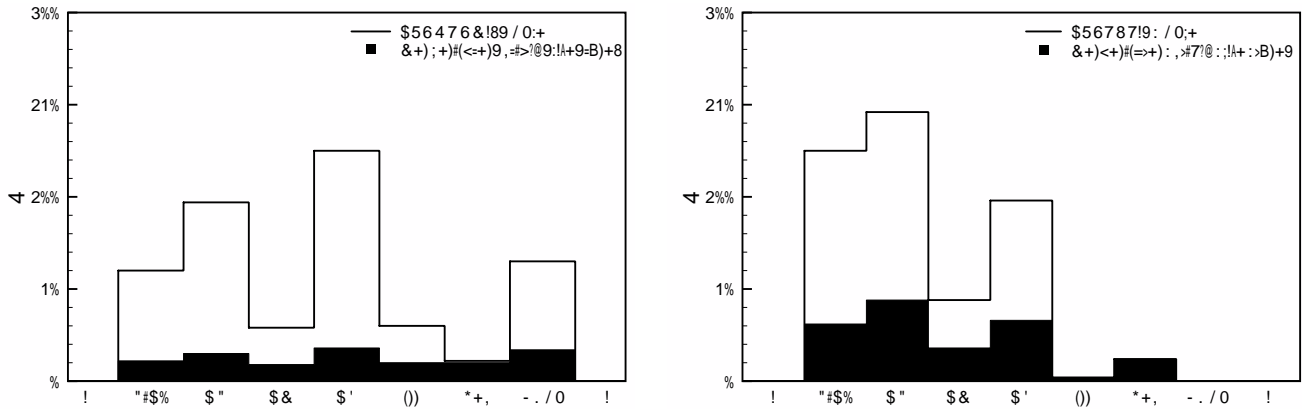


Figure 6. Histograms of the number of galaxies per morphological type within the SFRNORM (*left panel*) and SFRTOT (*right panel*) samples. The *filled* portions of the histograms show the number of galaxies within that particular class which showed evidence of a merger or some form of tidal or interaction activity.

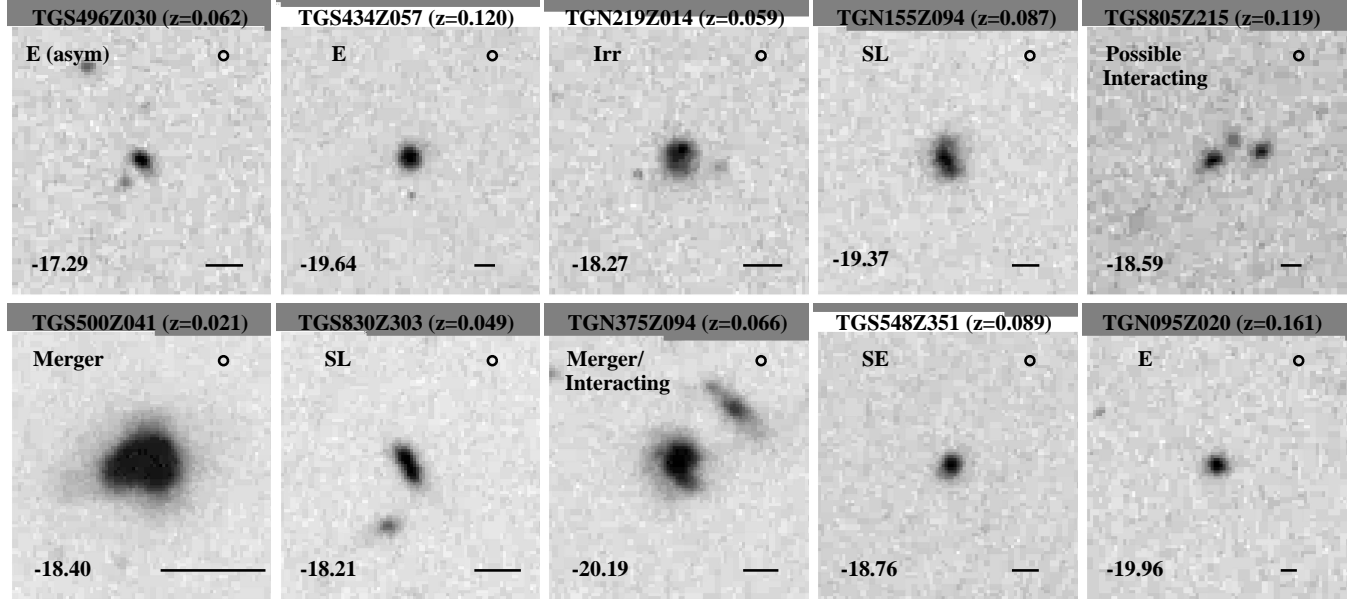
4 LUMINOSITY FUNCTION

The luminosity function is an essential diagnostic tool for samples of galaxies. It encodes information about galaxy populations which may hold key clues to their evolution. For example, if it is found that our population comprises

only very luminous galaxies we could speculate that in order to trigger a starburst a major merger would be required, whereas a sample of low luminosity galaxies are more likely to be affected by tidal interactions, hence we expect weaker type interactions may be observed as triggers.

Table 1. Morphological classifications for the SFRNORM and SFRTOT samples, based on visual inspection of SSS b_J and r_F images.

Sample	E/S0	SE	SM	SL	Irr	Pec	Comp	Merger/ Interact	Possible Merger/ Interact
SFRNORM	14 per cent	23 per cent	7 per cent	30 per cent	7 per cent	3 per cent	16 per cent	16 per cent	6 per cent
SFRTOT	29 per cent	35 per cent	11 per cent	23 per cent	0 per cent	2 per cent	0 per cent	28 per cent	6 per cent


Figure 7. SSS b_J band 1×1 arcmin $\times 2$ images of the starburst galaxies whose spectra are shown in Figs. 3 and 5. The *top row* contains the images for the SFRNORM galaxies shown in Fig. 3 while the *bottom row* contains the images for the SFRTOT galaxies shown in Fig. 5. The *bar* on the lower right of each image corresponds to 10 kpc at the galaxy redshift. The *circle* shown at the top right hand corner indicates the size of the 2 arcsec 2dF fibre. The absolute b_J magnitudes are given in the bottom left corner (as $M_b - 5 \log_{10} h$). The morphological classifications from Section 3 are given in the top left corner

We derive the b_J band luminosity functions, $\Phi(M)$, for our three (SFRNORM, SFRTOT and SFRTOT+) starburst samples and the 2dFGRS sample using the Stepwise Maximum Likelihood (SWML) method described by Efstathiou et al. (1988). In order to minimize the effect of varying completeness in the different 2dFGRS fields, we set apparent magnitude limits of $14 < b_J < 19.2$ for all 3 samples. For the complete 2dFGRS sample, the redshift was limited to $0.002 < z < 0.18$ to match the redshift limits of our starburst samples. These limits restricted the initial samples to sizes of 311, 412, 239 and 108638 for the SFRNORM, SFRTOT, SFRTOT+ and 2dFGRS catalogues, respectively. SSS b_J and r_F magnitudes were used to determine absolute magnitudes which were ‘K - corrected’ and also ‘E-corrected’ for the luminosity evolution of an average 2dFGRS galaxy (Norberg et al. 2002).

The SWML estimator requires normalization, hence we normalize each luminosity function to a constant source surface density, σ . To obtain σ , we used the parameters derived by Norberg et al. (2002) in fitting a Schechter function to the 2dFGRS catalogue in the absolute magnitude interval $-16.5 \leq M_{b_J} - 5 \log_{10} h \leq -22$ (i.e., $M_{b_J}^* - 5 \log_{10} h = -19.66$, $\alpha = -1.21$ and $\Phi^* = 1.61 \times 10^{-2} h^3 \text{Mpc}^{-3}$). We integrate the Schechter function using these parameters within the redshift interval $0.002 \leq z \leq 0.18$ and magnitude interval $14 < b_J < 19.2$ to obtain $\sigma = 124.6 \text{ deg}^{-2}$. This normalization allows us to investigate differences in shapes of

the luminosity functions for each sample. The fractional errors presented for $\Phi(M)$ are Poisson $1/\sqrt{N}$ errors, where N is the number of objects in the magnitude bin of interest. We used the least-squares method to fit Schechter functions to each of the 2dFGRS, SFRNORM, SFRTOT and SFRTOT+ luminosity functions, with the best fitting Schechter parameters presented in Table 2. Figure 8 shows the luminosity functions derived from the SFRNORM, SFRTOT, SFRTOT+ and 2dFGRS samples with best fitting Schechter functions overplotted. The appearance of the SFRNORM luminosity function is significantly different from that of the 2dFGRS sample, and we quantify this using a chi-squared test. The chi-squared test is performed only where bins contain more than five objects (since the chi-squared test is not robust where bins contain less than 5 counts), and returns a vanishingly small probability that the SFRNORM luminosity function is consistent with that of the whole 2dFGRS catalogue. This also becomes clear on comparison of the SFRNORM and 2dFGRS Schechter function parameters, with the SFRNORM sample showing both a fainter $M_{b_J}^* - 5 \log_{10} h$ and steeper faint end slope (α). It is clear that the SFRNORM sample is dominated by galaxies with $M_{b_J} - 5 \log_{10} h > -18$ when compared to the overall 2dFGRS sample. This portion of the luminosity function is generally occupied by dwarf and irregular type galaxies. The domination of low luminosity galaxies in the SFRNORM sample is not unexpected, since the normalized SFR is es-

Table 2. Schechter function parameters derived from a least-squares fit to the 2dFGRS, SFRNORM, SFRTOT and SFRTOT+ samples. The errors are $\pm 1\sigma$.

Sample	$M_{b_J}^* - 5\log_{10}(h)$	α	$\Phi^* (10^{-3}h^3\text{Mpc}^{-3})$
2dFGRS	-19.65 ± 0.02	-1.17 ± 0.01	13.1 ± 0.3
SFRNORM	-18.73 ± 0.20	-1.50 ± 0.07	27.2 ± 7.6
SFRTOT	-18.51 ± 0.07	1.24 ± 0.14	13.8 ± 1.4
SFRTOT+	-18.69 ± 0.1	0.58 ± 0.16	21.1 ± 1.4

essentially a SFR per unit luminosity, hence the measurement is biased towards low luminosity galaxies. This bias does not detract from the physical importance of this sample; the SFRNORM sample just consists of a different class of starburst object, i.e., those that don't necessarily have prodigious SFR, but have SFR much higher than their quiescent SFR values.

The SFRTOT luminosity function also differs significantly from that of the 2dFGRS luminosity function - a chi-squared test conducted as outlined above shows a vanishingly small probability that the 2 luminosity functions are consistent, however, the SFRTOT sample differs in that it consists mainly of galaxies that are within ± 1 mags of the value of $M_{b_J}^* - 5\log_{10}h$ derived by Norberg et al. (2002) for the entire 2dFGRS sample. This can be understood by considering the morphological analysis in section 3, where 69 per cent of the sample were classified as spiral type galaxies and 29 per cent as S0/E type. Jerjen & Tammann (1997) presented type-specific luminosity functions where the SO and spiral galaxy luminosity functions are best described by a Gaussian function. Thus, as expected, our Schechter function fits have $\alpha > -1$, and the function behaves similarly to a modified Gaussian (see Table 2). The faint tail is supplied by a small number of low luminosity dwarf type galaxies where the luminosity function behaves like a Schechter function.

It should also be noted that a burst of star formation will increase the b_J magnitude of a galaxy, hence pushing it towards brighter magnitudes up the luminosity function. The galaxies at the faint end of the SFRNORM sample would most likely fall below the magnitude cut off of the 2dFGRS survey if they were not starbursting.

5 LOCAL ENVIRONMENT

We next examine the local environment of our starburst galaxies, and quantitatively assess whether it is of relevance to the starburst phenomenon. In doing so, we are particularly interested in the presence of near neighbour galaxies, the frequency of which was seen to be quite high when morphologically classifying our starburst samples visually (see Section 3). We use the SSS to extract catalogues of objects within 30 arcmin radius from our starburst galaxies. The approximate magnitude limits for the photographic plates scanned to produce the SSS are $r_F=21.5$ and $b_J=22.5$. The objects in each catalogue are assigned a class parameter 1 through 4 based on morphological parameters and areal profile. In this classification scheme, galaxies are class=1, stars class=2, unclassified class=3 and noise class=4. During the analysis, we use only those catalogue members with SSS class=1, noting there may be some contamination by stars.

We conduct experiments designed to test for correlations between the starburst galaxy and its environment on scales less than 1 Mpc. During this analysis, we assume all neighbours lie at the same redshift as the starburst and convert angular separations to projected physical separations accordingly. Further to determining whether our starbursts have near neighbours, we would like to estimate the magnitude of the gravitational perturbation due to the presence of the nearest neighbour. Hence we define an arbitrary mass ratio whereby if the near neighbour is more massive than one third of the mass of the starburst of interest, it constitutes evidence of some major interaction, whereas if the mass of the nearest neighbour is less than one third the mass of the starburst, it constitutes a minor interaction. By assuming the mass - to - light ratio in the r_F band is the same for the starburst and near neighbour, a mass ratio of 1:3 constitutes a magnitude difference of 1.2 mag. We then define bright and faint near neighbours (ie. major and minor interaction), by comparing the neighbour r_F magnitude to that of the starburst magnitude corrected for the brightening due to the starburst, r_F^* (see Appendix A for more details on how r_F^* is derived), such that a faint neighbour has $r_F^*+1.2 < r_F \leq 21.5$ and a bright near neighbour has $r_F \leq r_F^*+1.2$.

As an alternative local environment indicator, we use the surface density of the five nearest bright neighbours, $\Sigma = 5/\pi d_5^2$ where d_5 is the transverse physical distance to the fifth nearest bright neighbour.

The final test is designed to estimate the interaction strength due to the nearest neighbour. We use the Q-parameter, which estimates the ratio of the tidal ($F_{tidal} = GM_{NN}R_{SB}R_{sep}^{-3}$) to binding force ($F_{bind} = GM_{SB}R_{SB}^{-2}$) (Dahari 1984) hence

$$Q \propto \left(\frac{M_{NN}}{M_{SB}}\right) \left(\frac{D_{SB}}{R_{sep}}\right)^3 \approx \frac{(D_n D_{sb})^{1.5}}{S^3}. \quad (3)$$

Here, M_{SB}/M_{NN} is the starburst/near neighbour mass and it is assumed that $M_{NN} \propto (D_{NN})^{1.5}$ and $M_{SB} \propto (D_{SB})^{1.5}$ (Rubin et al. 1982), where D_{NN} is the nearest neighbour semi-major axis physical diameter, whilst D_{SB} is the semi-major axis physical diameter of the starburst of interest and $S \simeq R_{sep}$ where S is the projected physical separation of the starburst and its nearest neighbour and R_{sep} is the true three-dimensional separation. D_{SB} and D_{NN} are derived from the intensity weighted semi-major axis given in the SSS catalogues which are used in conjunction with the intensity weighted semi-minor axis to define an elliptical area for determination of isophotal magnitudes.

In order to gauge the significance of our results, for each test we compare our starburst sample results to that of a random sample containing 1000 galaxies. The selection of the random sample is crucial in order to negate systematic biases. Since we are using projected information to seek correlations with physical associations, it is important the random sample has the same redshift distribution as the starburst sample of interest. This ensures both samples have the same systematic contributions due to foreground and background galaxies. The random sample should also have the same magnitude distribution in each redshift bin. This is because we are using the r_F magnitudes as a proxy for mass in an attempt to estimate the interaction strength. Hence

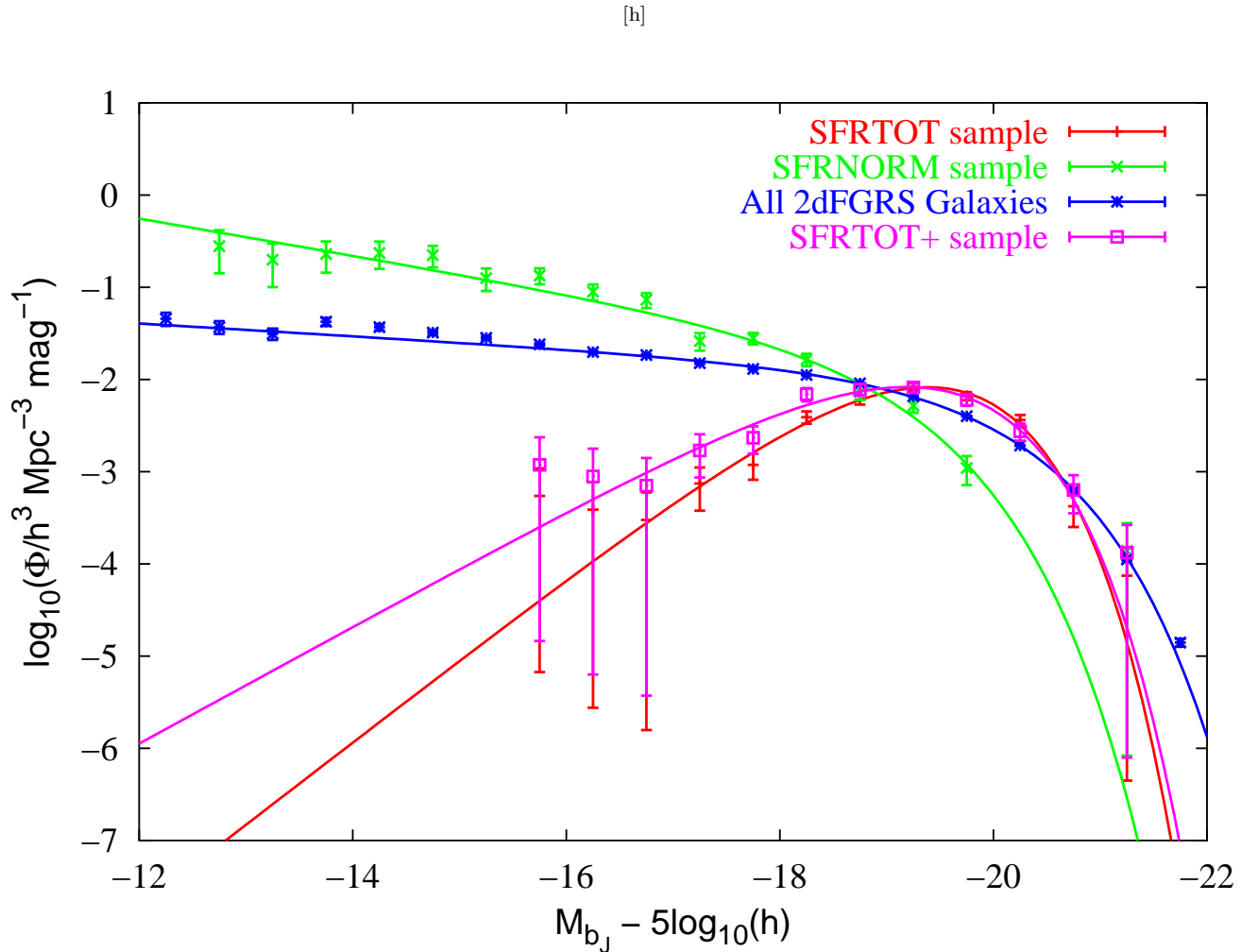


Figure 8. The luminosity distributions and the fitted Schechter luminosity functions for the SFRNORM (*green*), SFRTOT(*orange*), SFRTOT+(*pink*) and 2dFGRS(*blue*) samples. The luminosity functions were derived using a stepwise maximum likelihood method and normalized to a constant source surface density of $\sigma = 124.6 \text{ deg}^{-2}$. The errors are fractional Poissonian errors.

we select separate random samples for the SFRNORM and SFRTOT samples, each with redshift distributions determined by the starburst sample. The magnitude distributions were chosen to correspond to the *brightening corrected* magnitude starburst distributions. The approximate r_F magnitude limit for the 2dFGRS survey is $r_F \sim 19$ (assuming on average $b_J - r_F = 0.5$), hence the random sample contains only galaxies with $r_F \leq 19$, whilst we only use starburst galaxies with *brightening corrected* magnitudes $r_F^* \leq 19$. This additional constraint on the starburst magnitude produced samples of 197, 412 and 239 galaxies for the SFRNORM, SFRTOT and SFRTOT+ samples, respectively.

Figure 9 shows the near neighbour results for the SFRNORM sample. The errors presented are Poisson \sqrt{N} errors. The Kolmogorov-Smirnov (KS) test was used to determine the probability that the random and starburst samples were drawn from the same parent distribution. The KS statistic measures the maximum value of the absolute difference in the cumulative probability distribution of two samples and determines the significance of the difference from the KS-statistic distribution. Hence, we determine a probability, p , that the KS statistic could exceed the observed value due to some random fluctuation in the data sets. A

small value for p indicates two samples are not drawn from the same parent population. The p values determined for the faint nearest neighbour, bright nearest neighbour, surface density of bright neighbours and the Q -parameter are 0.16, 0.015, 0.13 and 0.0017 respectively. These probabilities imply the bright near neighbour and Q -parameter distributions differ significantly (at the 98.5 and 99.8 per cent levels, respectively) from the random distributions, with the bright near neighbour distribution having an excess of neighbours within $\sim 20\text{kpc}$, whilst the Q -parameter distribution has a higher proportion of galaxies with $Q > -1$. We find 38 per cent of our SFRNORM galaxies have a bright neighbour within 20kpc, and upon cross correlating with the morphological analysis in Section 3 an additional 16 per cent of this sample are classified as merger/interacting or possible merger/interacting yet have no bright neighbour within 20kpc.

Figure 10 shows the near neighbour results for the SFRTOT and SFRTOT+ samples, with Poissonian errors presented. We used the KS test to derive p values for the faint nearest neighbour, bright nearest neighbour, surface density of bright neighbours and the Q -parameter of .1(.76), 4.6×10^{-5} (5.2×10^{-5}), 0.3(0.01) and 5×10^{-8} (6.7×10^{-8}),

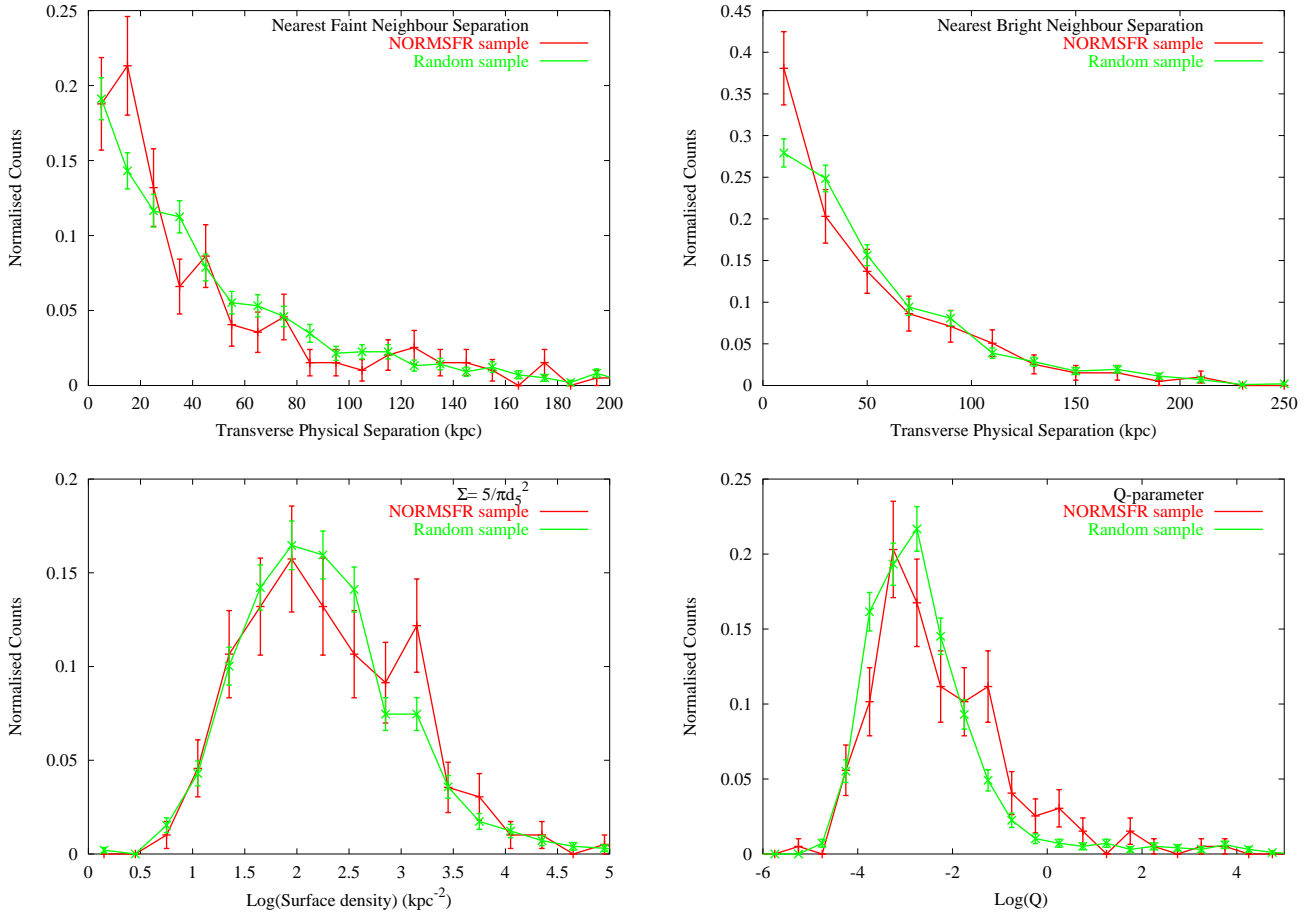


Figure 9. Near neighbour analysis results for the SFRNORM sample. The *upper left* plot shows the distribution of distances to the nearest faint neighbour, the *upper right* plot shows the distribution of distances to the nearest bright neighbour, the *lower left* plot shows the distribution of the surface density of the nearest five bright neighbours, and the *lower right* plot shows the distribution of Q-parameters as described in Section 5. The KS probabilities (see text) are 0.16, 0.015, 0.13 and 0.0017 for the faint near neighbour, bright near neighbour, surface density and Q-parameter, respectively.

respectively, where the results for the SFRTOT+ sample are shown in brackets. Again, we find the bright near neighbour and Q-parameter distributions differ significantly from the random distributions (at > 99 per cent level), where the bright near neighbour distribution shows an excess of near neighbours within ~ 20 kpc and the Q-parameter distribution has a higher proportion of galaxies with $Q > -1$. In addition to the 15 per cent for which we see a bright near neighbour within 20kpc, we find 25 per cent are classified as merger/interacting or possible merger/interacting yet have no bright near neighbour within 20kpc. Of the 22 per cent of the SFRTOT sample classified as E/S0, we find only one-quarter harbour a near neighbour within 50kpc, hence we have a significant population of isolated, starbursting E/S0 galaxies.

The fact that the Σ_5 distributions for the starbursts do not differ significantly from the overall random samples (similar to the findings of Mateus & Sodre (2004)), along with the statistically significant excess of bright near neighbours within 20kpc for both starburst samples, suggest that a near neighbour plays an important role in triggering a starburst. These near neighbour results are consistent with

previous results showing a neighbour within 50kpc correlates with enhanced star formation rates (Nikolic et al. 2004; Lambas et al. 2003; Barton, Geller & Kenyon 2000). The results are also consistent with those of Freedman et al. (2006) who find that only galaxy pairs with small luminosity contrasts show any trend of increased H α emission at smaller projected radii. Goto (2005) also find a higher number of near neighbours within 50kpc for 266 E+A galaxies when compared to field galaxies, consistent with our results. The Q parameter confirms the importance of a near neighbour, with both starburst samples showing excess galaxies with $Q > -1$ compared to the random samples. Combining the near neighbour results with the morphological analysis in Section 3 we conclude that galaxy - galaxy interactions are important in triggering 40-50 per cent of the starbursts in our samples. Further to this, we note that there is no excess of faint near neighbours in either sample, implying that the interaction required to trigger a massive starburst needs to be significant.

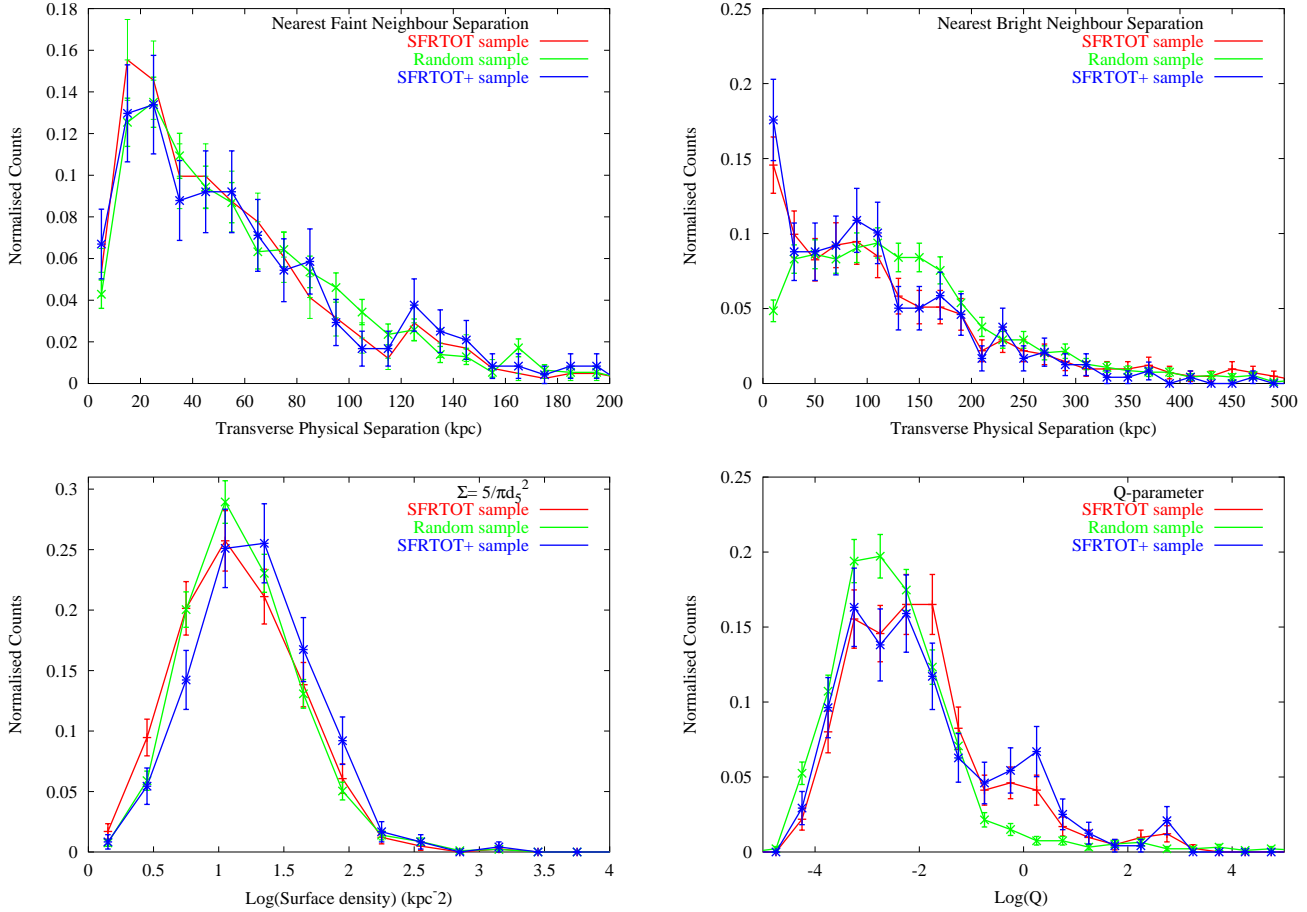


Figure 10. Same analyses as shown in Fig. 9 for the SFRTOT (orange) and SFRTOT+ (blue) samples. The KS probabilities (see text) are 0.1 (0.76), 4.6×10^{-5} (5.2×10^{-5}), 0.3 (0.01) and 5.0×10^{-8} (6.7×10^{-5}) for the faint near neighbour, bright near neighbour, surface density and Q-parameter, respectively where the SFRTOT+ values are given in brackets.

6 LARGE SCALE ENVIRONMENT

Here we investigate the environments and clustering properties of our starburst galaxy samples on more global scales, that is those larger than > 1 Mpc.

6.1 Membership of groups from the 2PIGG catalogue

The 2PIGG galaxy groups catalogue (Eke et al. 2004a) was compiled from the 2dFGRS catalogue using a friend-of-friends percolation algorithm. The catalogue was drawn from the contiguous SGP and NGP regions. For the purposes of our analysis, we restrict our attention to groups at redshifts $z < 0.12$, since above this limit interloper contamination increases, whilst the fraction of the observed group luminosity drops below half the total group luminosity. There are two catalogues each for the NGP and SGP, the first contains the 2dFGRS galaxy information along with a flag of 0 for ungrouped or the group ID number if the galaxy is linked to a group, the second contains information pertaining to group properties such as velocity dispersion, the unweighted number of group members and the rms projected galaxy separation. The

catalogues are publicly available and can be obtained at <http://www.mso.anu.edu.au/2dFGRS/Public/2PIGG/>.

We would like to ascertain whether our starburst galaxies reside in particular types of groups when compared to a sample of 5000 random galaxies selected from the parent 2dFGRScatalogue such that their redshift distribution is the same as that of the starburst sample. There are a number of methods to determine group properties from the 2PIGG catalogues. These include dynamical mass estimates, the number of galaxies within each group and total group luminosity. Eke et al. (2004b) showed that the weighted total group luminosity is the most robust estimator of group size, since the dynamical estimators have large errors for the small groups, whilst the number of observed members residing in a higher redshift group can be significantly lower than the actual number due to the survey magnitude limit. Here we have used the weighted observed group b_J band luminosity defined by Eke et al. (2004b) as

$$L_{obs,b_J} = \sum_i^{n_{gal}} w_i L_{i,b_J}, \quad (4)$$

where w_i is the weight correcting for the incompleteness of the 2dFGRS, L_{i,b_J} is the b_J luminosity of the i th group

member and n_{gal} is the number of galaxies assigned to the group. From the observed weighted group luminosity, the total weighted group luminosity was determined by dividing by the incomplete Gamma function $\Gamma(\alpha + 2, L_{min}/L_*)/(\Gamma(\alpha + 2))$. This allows extrapolation from the lowest luminosity galaxy detectable at the group redshift, L_{min} , to zero luminosity, to correct for group members lying below the survey magnitude limit. The correction is derived from the integral of the Schechter luminosity function in the luminosity range 0 to L_{min} .

In Figure 11 we plot the distributions of the corrected total group luminosities for the starburst and random samples. We find 52, 58, 56, 56 and 56 per cent of the galaxies in the SFRNORM, SFRTOT, and SFRTOT+ samples reside in groups, respectively. Notably, these percentages are no different to those for the 2dFGRS galaxy population as a whole, with both random samples having 56 per cent of their galaxies residing in groups. Both the chi-squared and KS tests were used to determine the probability that the starburst and random samples were drawn from the same parent distribution with both tests giving probabilities of less than 1 per cent of this occurring for each starburst sample. The distribution of luminosities for the SFRNORM sample are skewed to fainter and presumably poorer groups compared to the random sample, whilst the SFRTOT sample is strongly peaked at around $8L_*$, ie. medium sized groups.

6.2 Membership of rich clusters

De Propris et al. (2002) have compiled a list of galaxy clusters from the Abell, APM and EDCC catalogues lying within the 2dFGRS regions. Redshifts, velocity dispersions and cluster centroids were measured for the majority of the clusters using the 2dFGRS data. We use both redshift information and cluster-centric distance to determine cluster membership for our starburst galaxies, using only those clusters with measured redshifts. The velocity dispersion was used to determine the radius, r_{200} , at which the density of the cluster exceeds that of the critical density by a factor of 200 on the assumption the cluster is an isothermal sphere (see Calberg et al. 1997). r_{200} is an approximation of the virial radius of the cluster and is defined by:

$$r_{200} = \frac{\sqrt{3}\sigma_v}{10H(z)}, \quad (5)$$

where σ_v is the velocity dispersion, z is the cluster redshift and $H(z) = H_0\sqrt{\Omega_m(1+z)^3 + \Omega_\Lambda}$. For those clusters without a measured σ_v we used the average σ_v for the cluster sample in determining r_{200} . We determine the peculiar velocity of the starburst with respect to the cluster, $v_{pec} = c((1+z_{pec})^2 - 1)/((1+z_{pec})^2 + 1)$ where $z_{pec} = (1+(z-z_{sb}))/1+z$ is the non-cosmological redshift contribution of the starburst galaxy to its observed redshift, z_{sb} , due to its peculiar velocity within the cluster. We determined r , the projected physical distance of the starburst from the cluster centroid as $r = \Delta\theta\chi(z)/(1+z)$ where $\chi(z)$ is the radial comoving distance to the cluster and $\Delta\theta$ is the angular separation of the cluster centroid and the starburst galaxy. Those starburst galaxies with $r \leq r_{200}$ and $v_{pec} \leq 3\sigma_v$ are classed as cluster members, whilst those with $r_{200} < r \leq 2r_{200}$ and $v_{pec} \leq 3\sigma_v$ are classed as lying in the cluster outskirts and those with $2r_{200} < r \leq 4r_{200}$

and $v_{pec} \leq 3\sigma_v$ are classed as being within the infall regions of the cluster.

Using the above definitions, we find for the SFRNORM sample that 3, 10 and 19 per cent of starbursts lie within the cluster, outskirts and infall regions, respectively, compared to 8, 8 and 21 per cent respectively, for our random sample of 5,000 galaxies. The same analysis performed on the SFRTOT (SFRTOT+) sample produces 5 (5), 6 (7) and 20 (22) per cent within the cluster, outskirts and infall regions, respectively, compared to 9, 10 and 24 per cent for our random sample of 5,000 galaxies. Hence, we conclude that the starburst galaxies within our sample are not preferentially found within clusters, with ~ 30 per cent total found within $4 \times r_{200}$ Mpc of a cluster centroid.

6.3 Residence within large-scale overdensities

As another method of quantifying the large scale structure surrounding our starburst galaxies, we measured the overdensities, δ , within comoving spheres of radii $1 \leq r_0 \leq 15$ Mpc in 1 Mpc intervals. Specifically, we used the comoving distance of each surrounding galaxy to transform its right ascension, declination and redshift into 3-D cartesian coordinates, making no attempt to correct for peculiar velocity distortions in redshift space, and measure its physical separation from the starburst galaxy of interest. For each comoving sphere centred on a starburst galaxy, we add up the number of galaxies in the 2dFGRS catalogue within r_0 giving the number of observed galaxies within the sphere, N_{obs} . The number of galaxies expected in each comoving sphere in the absence of clustering, N_{exp} , was determined using random mock catalogues generated by the publically available 2dFGRS mask software written by Peder Norberg and Shaun Cole (see <http://www2.aao.gov.au/2dFGRS/>). Again, using 3-D cartesian coordinates, we measure the physical separation between the mock catalogue galaxy and the starburst of interest. We obtain N_{exp} by adding up the number of mock galaxies surrounding each starburst galaxy within r_0 . The average overdensity within each comoving sphere is calculated as follows:

$$\overline{\delta(r_0)} = \frac{1}{n_{sb}} \sum_{i=1}^{n_{sb}} 30 \frac{N_{obs}}{N_{exp}} - 1, \quad (6)$$

where n_{sb} is the number of starburst galaxies used in the analysis. The random mock catalogue was generated such that the sample size is 30 times that of the 2dFGRS catalogue out to $z=0.18$ with a limiting magnitude of $b_J=19.45$, hence the multiplicative factor of 30 in eqn. 6. The larger sample size for the mock random catalogue was used in order to minimize the noise in the denominator caused by low number statistics.

We compared to a random sample selected from the 2dFGRS to have the same redshift distribution as the starburst sample of interest, such that redshift dependent biases are minimized. We used only the SGP and NGP regions for this analysis, the results of which are presented in Figure 12. The error bars presented are the variance, $\sigma/\sqrt{n_{sb}}$, of the overdensity distribution where σ is the standard deviation of the distribution of mean overdensities and n_{sb} is the number of starburst galaxies in the sample. The results clearly indicate that both starburst samples reside in lower density

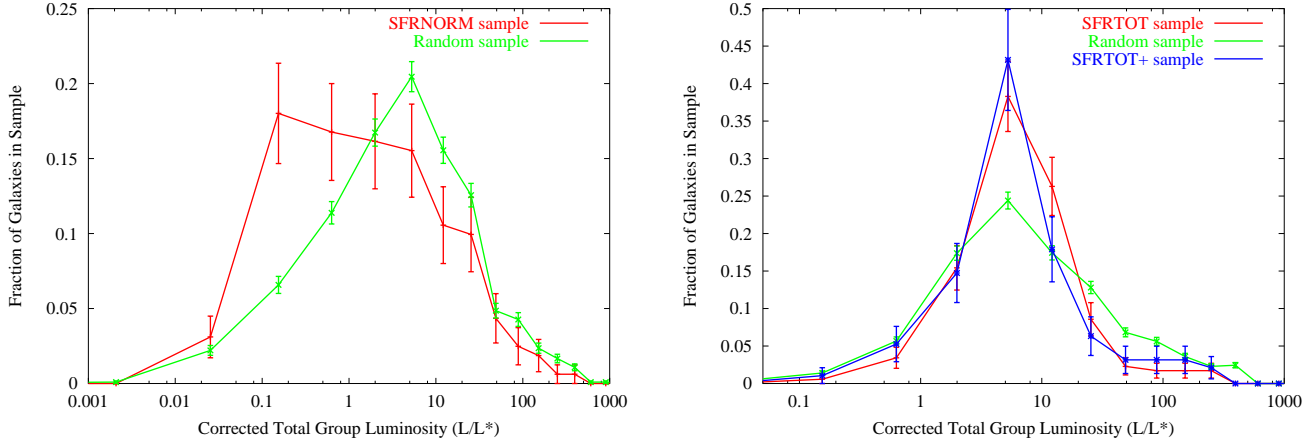


Figure 11. The distribution of corrected total group luminosities for the SFRNORM sample (*left*) and SFRTOT sample (*right*) compared to the same distributions for the associated random samples (see text for details). Error bars show Poissonian \sqrt{N} values, where N is the number of galaxies in each bin. Both starburst samples differ from their respective random samples at greater than 99 per cent significance.

[h]

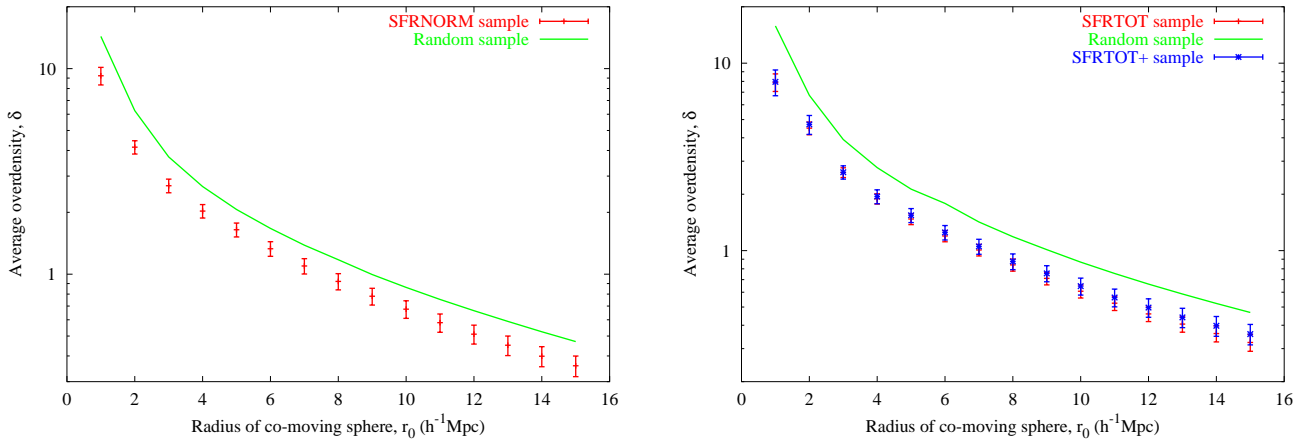


Figure 12. The average overdensity surrounding each starburst galaxy within comoving spheres of radius r_0 obtained by comparing the number of galaxies in the 2dFGRS within r_0 with that of a mock random catalogue. The analysis was repeated on a sample of 10,000 random 2dFGRS galaxies selected such that the redshift distribution is the same as the starburst sample of interest. The figure on the *left* shows the results for the SFRNORM sample, whilst that on the *right* shows the results for the SFRTOT and SFRTOT+ samples. The error bars represent the variance in the overdensity distribution; for the random samples these are negligible and hence not presented.

environments than the randomly selected 2dFGRS galaxies on all scales from 1Mpc to 15Mpc. A common measure of environment is the overdensity within spheres of radius $8h^{-1}$ Mpc. On this scale, we measure average overdensities of $0.92 (\pm 0.08)$ and $0.84 (\pm 0.06)$ for the SFRNORM and SFRTOT samples, respectively, which are both consistent (within errors) with that measured by Blake et al. (2004) for the 2dFGRS E+A sample. For the random samples we measure $1.17 (\pm 0.02)$ and $1.19 (\pm 0.02)$ for the SFRNORM and SFRTOT random samples, respectively. Despite using a different method to measure the number of galaxies expected in each sphere in an unclustered Universe, the results are, within the errors, consistent with the value measured for a random sample by Blake et al. (2004).

6.4 Spatial cross-correlation function

The spatial cross-correlation function measures the clustering properties of galaxies by estimating whether a particular type of galaxy is biased to inhabit high mass or low mass haloes when compared to the bias of another type of galaxy. If we approximate a linear bias for the galaxies in the starburst samples, b_{sb} , then their spatial auto-correlation function, $\xi_{sb, sb}$, as a function of spatial separation, r , takes the form

$$\xi_{sb, sb}(r) = b_{sb}^2 \xi_{m, m}(r), \quad (7)$$

where $\xi_{m, m}(r)$ is the spatial auto-correlation function of the underlying mass density field.

Due to the relatively low number of galaxies in our starburst samples, shot noise dominates the auto-correlation function, hence we measure the cross-correlation function, $\xi_{sb,g}$, of the starburst galaxies with the rest of the 2dFGRS catalogue. In the linear bias approximation,

$$\xi_{sb,g}(r) = b_{sb}b_g\xi_{m,m}(r), \quad (8)$$

where b_g is the bias factor for an average 2dFGRS galaxy. We can estimate the relative bias of the starbursts to the 2dFGRS galaxies by measuring the auto-correlation function for the 2dFGRS galaxies, $\xi_{g,g}(r) = b_g^2\xi_{m,m}(r)$, such that

$$\frac{b_{sb}}{b_g} = \frac{\xi_{sb,g}(r)}{\xi_{g,g}(r)}. \quad (9)$$

We have measured all correlation functions in redshift space, making no attempt to correct for peculiar velocities. The cross-correlation function is measured by comparing the cross-pair counts of the starburst samples with the full 2dFGRS catalogue and an unclustered random distribution with the same redshift distribution and selection mask as the 2dFGRS sample, whilst in order to minimize fluctuations due the selection function of the starburst galaxies, we measure the cross pair counts of the 2dFGRS with an unclustered random sample generated with the same redshift distribution as the starburst sample of interest. The random distributions were generated using the same publicly available 2dFGRS mask software as in Section 6.3 and contain the same number of galaxies as the real data samples they are simulating. We use a modified Landy-Szalay estimator (Blake et al. 2006) for the cross-correlation function, $\xi_{sb,g}(s)$, which is given by

$$\xi_{sb,g}(s) = \frac{N_{sb,g}(s)}{N_{Rsb,Rg}(s)} - \frac{N_{sb,Rg}(s)}{N_{Rsb,Rg}(s)} - \frac{N_{g,Rsb}(s)}{N_{Rsb,Rg}(s)} + 1, \quad (10)$$

where $N_{sb,g}(s)$ is the starburst - 2dFGRS pair cross count, $N_{sb,Rg}(s)$ is the starburst - simulated unclustered random 2dFGRS sample pair cross count, $N_{g,Rsb}(s)$ is the 2dFGRS - simulated unclustered random starburst sample pair cross count and $N_{Rsb,Rg}$ is the cross pair count for the two random samples, whilst the s denotes a redshift space separation. Each of the $N_{sb,Rg}(s)$, $N_{g,Rsb}(s)$ and $N_{Rsb,Rg}$ are measured by generating 10 random catalogues and taking the average of the 10 measurements. In order to estimate the auto-correlation function for the 2dFGRS galaxies, $\xi_{g,g}$, for comparison, we use the Landy & Szalay estimator (Landy & Szalay 1993), given by

$$\xi_{g,g}(s) = \frac{N_{g,g}(s)}{N_{Rg,Rg}(s)} - \frac{2N_{g,Rg}(s)}{N_{Rg,Rg}(s)} + 1, \quad (11)$$

where $N_{g,g}$ is the auto-pair count for the 2dFGRS galaxies, $N_{g,Rg}$ is the 2dFGRS - random pair cross count and $N_{Rg,Rg}(s)$ is the random - random pair auto count.

We include the contiguous NGP and SGP strips in our analysis, but not the random fields since the variance in the correlation function is large due to edge effects. The results are displayed in Figure 13. We do not assign Poisson error bars here, since they are known to underestimate the true variance of the estimators in equations (9) and (10) by a significant amount (Landy & Szalay 1993). The errors presented are estimated using the ‘jack-knife’ approach whereby the NGP and SGP strips are divided into four quadrants and

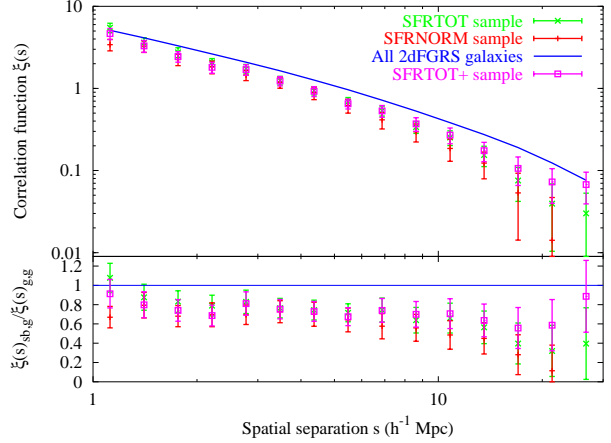


Figure 13. Spatial correlation function measurements for the SFRNORM, SFRNORM, SFRNORM+ and 2dFGRS samples. The plotted errors are derived using a jack-knife re-sampling technique, as described in the text. The lower plot shows the ratio of $\xi_{sb,g}(s)/\xi_{g,g}(s)$ for the SFRNORM, SFRNORM and SFRNORM+ samples.

the correlation function estimation is repeated eight times, keeping 7 quadrants; the error for each separation bin is then estimated by multiplying the resulting standard deviation across the eight subsamples by $\sqrt{8}$.

The results are presented in Figure 13 where $\xi_{g,g}(s)$ and $\xi_{sb,g}(s)$ are plotted for the SFRNORM, SFRNORM, SFRNORM+ and the 2dFGRS catalogues. We also plot the ratio of $\xi_{sb,g}(s)/\xi_{g,g}(s)$. The SFRNORM, SFRNORM and SFRNORM+ samples are much less clustered than the entire 2dFGRS sample, on all scales (apart from the smallest separation bin for the SFRNORM and SFRNORM+ samples, which are consistent with the 2dFGRS sample within errors) implying that $b_{sb} < b_g$. In fact, the average ratio of b_{sb}/b_g is 0.53, 0.69 and 0.73 for the SFRNORM, SFRNORM and SFRNORM+ samples, respectively. These results are consistent with the Blake et al. (2004) ‘average Balmer’ E+A catalogue, which is found to be somewhat less clustered than the 2dFGRS catalogue, although it is noted their sample size is only 50, hence the results are tentative. The results are also consistent with those of Madgwick et al. (2003), who find that active galaxies, defined by the η parameter (Madgwick et al. 2002), are less clustered than passive galaxies out to real space separations of $10h^{-1}\text{Mpc}$.

7 SUMMARY AND DISCUSSION

We have selected two samples of starburst galaxies, each containing 418 galaxies, using different methods for deriving the star formation rate from the $H\alpha$ emission line. The selection methods are complementary, in that selecting starburst galaxies based on $W_{H\alpha}$ alone is known to be biased to low mass galaxies (our SFRNORM sample), whereas the selection of galaxies by measuring the total absolute star formation rate selects a sample of more luminous, and presumably more massive galaxies (our SFRNORM sample). Hence, we cover a broad spectrum in mass with our two starburst samples. We study the environments and morphologies of

the galaxies in these samples in an effort to ascertain mechanisms which may be important in triggering a burst of star formation, and in truncating the star formation leading to the E+A type spectrum.

Regarding the morphological analysis of our starburst galaxies, we find;

(i) Neither of the starburst samples are dominated by a particular morphological type, although the ratios of the morphological types differs between the two samples.

(ii) 20-30 per cent of our starburst galaxies exhibit signs of major merger/interaction or tidal activity.

(iii) 29 per cent of our SFRTOT sample are classified as E/S0 and of these early types 69 per cent show no evidence for merging/interaction nor do they harbour a bright near neighbour within 20kpc.

We have conducted the same environmental analyses on a sample of random 2dFGRS galaxies, selected such that systematic effects relevant to the particular analysis are minimized. Upon comparison with the random and starburst samples, we find the following;

(i) The luminosity function of the SFRNORM sample has a significantly steeper faint-end ($M_b > -18$) slope compared to the 2dFGRS catalogue. As noted above, selection based on $W_{H\alpha}$ alone is biased towards selecting low mass galaxies, hence we should expect a high number of low luminosity galaxies in our sample. In contrast, the SFRTOT sample shows a dearth of galaxies at $M_b > -18$, and is dominated by L^* and brighter galaxies. The dearth of fainter galaxies is presumably caused by the fact that the low luminosity galaxies don't have high *absolute* SFRs, but do have high SFRs compared to their quiescent states. Indeed, the majority of galaxies in the SFRNORM sample have SFR-TOT values $< 10M_{\odot} yr^{-1}$.

(ii) To study the local ($< 1\text{Mpc}$) environment of our starbursts, we cross-correlate the starburst catalogues with the SSS survey, finding both samples have a significant overdensity of bright near neighbours within 20kpc when compared to a random sample. The SFRTOT sample also shows an excess number of galaxies experiencing excess tidal forces due to a near neighbour. This excess is also present in the SFRNORM sample, although at a lower level of significance. For the local galaxy surface density and projected distance to faint near neighbour studies, we find the distributions for the starburst samples are consistent with that of a random sample.

(iii) On larger scales, we find that the those SFRNORM galaxies residing in groups preferentially inhabit low luminosity groups, whilst a higher fraction of those SFRTOT galaxies residing in groups inhabit average luminosity groups compared to random samples. On correlating with cluster catalogues, we find our starbursts do not preferentially inhabit clusters of galaxies. Upon measuring the overdensity within comoving spheres on scales 1-15 Mpc we find that starbursts lie in underdense regions compared to random samples on all scales. The cross-correlation function also shows that our starburst galaxies are less clustered on scales larger than 2Mpc compared to the 2dFGRS galaxies.

(iv) We find throughout the analysis that the SFR-TOT+ sample shows no significant differences from that of the SFRTOT sample.

From this analysis, we can conclude that starburst galaxies are less clustered and hence less biased on large

scales when compared to passive galaxies and appear to be mainly found within the field rather than clusters of galaxies. Local environment appears to be the key determinant in triggering a starburst, in the form of mergers and tidal interactions. The analysis of the types of groups our starbursts inhabit is consistent with the merger/interaction hypothesis when we consider that the SFRNORM sample is made up of primarily low luminosity/mass galaxies with presumably low velocity dispersions, whilst the SFRTOT sample consists of more luminous/massive galaxies which should have higher velocity dispersions. Mergers are rare in environments where the galaxy velocity dispersion is much higher than the stellar velocity dispersion, hence if mergers are the dominant mechanism triggering a starburst then we would expect to find low mass starbursts in low mass groups, and high mass starbursts in intermediate mass groups, consistent with the results presented here.

It is clear from our analysis that a large fraction of our starbursts show no evidence for merger/interaction, nor do they have a bright close near neighbour. Hence, some form of galaxy interaction can not have triggered the starburst. What mechanism is triggering the starburst in these galaxies? Also of note is that 22 per cent of the SFRTOT sample is classified as E/S0 with no signs of merger activity, whilst our near neighbour analysis shows only 25 per cent of these undisturbed E/S0 galaxies harbour a bright near neighbour within 50kpc. It may be that there is some merger activity, but either our criterion is too strict to define the galaxy as a merging/interacting one, or the SSS imaging is simply too poor to resolve any evidence of this. It may also be that there has been some tidal interaction with a near neighbour some time ago, and the near neighbour is now at some distance from the starburst, hence does not show up in our near neighbour analyses. For example, if a starburst was triggered by a galaxy interaction 500 Myrs ago and the near neighbour galaxy was traveling at 100 km s^{-1} , then the near neighbour would be some 50 kpc distant from the starbursting galaxy. This oversimplified example serves to show how evidence for a merger or tidal interaction may be missed in our analyses. There is also the possibility that these galaxies are in the later stages of swallowing a gas-rich faint dwarf galaxy which is no longer distinguishable from the host galaxy. However, if these starbursts were not triggered by some interaction, then an internal mechanism may be required to explain the burst. Detailed follow up spatially resolved spectroscopy and high resolution imaging is critical in order to determine the nature of the triggering mechanism in these galaxies.

Concerning starburst galaxies as E+A progenitors, it is important to ask if our samples are likely to evolve into E+A galaxies based on comparison of the evidence presented here and in Blake et al. (2004). Firstly, we must consider that Blake et al. (2004) found only 56 'true' E+A galaxies, whilst each of our starburst samples contain 418 galaxies despite probing a smaller volume. Perhaps only a small fraction of our starburst galaxies will go through an E+A phase. Comparison of the E+A and SFRNORM luminosity functions shows a marked difference at the faint end ($M_{bJ} - 5\log_{10}h < -18$) from which it would be easy to infer that our SFRNORM sample galaxies will not evolve into E+A galaxies. However, if our sample is predominantly dwarf starbursts which undergo periodic bursts of star for-

mation with a duty cycle of 10Myr, then we would expect post-starburst dwarf galaxies would display the characteristic E+A spectrum on very short time scales. Coupled with the fact that a large fraction of our SFRNORM sample are close to the magnitude limit of the 2dFGRS survey and would not be detected in their un-brightened, quiescent state, we expect low luminosity E+A galaxies would be very rare in the 2dFGRS survey. Indeed, this is seen in the Blake et al. (2004) survey. Thus, it is unlikely that our SFRNORM sample will evolve into the E+As observed by Blake et al. (2004).

Upon comparing our SFRTOT luminosity function with that of Blake et al. (2004) ‘average Balmer’ catalogue ($EW \sim 4.5\text{\AA}$), we find the two samples differ at 97.7 per cent significance level in the range $-17.75 > M_{b_J} - 5\log_{10}h > -20.75$ where the difference occurs due to a higher number of $M_{b_J} - 5\log_{10}h = -19 \pm 1$ galaxies in the SFRTOT sample. Taking this at face value, it would seem that the our starburst galaxies can not be progenitors to E+A galaxies. However, since we are measuring the b_J band luminosity function, we would expect the luminosity function of a starburst sample to be significantly different from that of a sample of quiescent galaxies with the same mass distribution. This is because the radiation emitted by the starburst is dominated by a population of young, massive O type stars which emit predominantly at blue wavelengths, and hence the b_J luminosity of a starburst galaxy is significantly enhanced compared to its quiescent state. After the starburst is truncated and the galaxy enters the E+A phase, its b_J luminosity gradually fades back towards its quiescent value. This evolution in b_J magnitude means the luminosity function is not a particularly good discriminator for the two samples. The k band luminosity function would provide a much better discriminator here, since it is less affected by the light emitted from starburst regions. Therefore, the difference in the b_J luminosity functions alone is not enough to rule out an evolutionary link between our starbursts and the E+A galaxies of Blake et al. (2004).

Blake et al. (2004) find no statistically significant differences between their E+A samples and random 2dFGRS samples in their near neighbours analysis, whereas here we find clear differences, particularly for the bright nearest neighbours within $\sim 20\text{kpc}$. This is also somewhat expected, since simulations have shown that the E+A phase generally occurs at a late stage in mergers when the cores of the two galaxies can no longer be distinguished (Bekki et al. 2001b), although Goto (2005) find an enhancement in the number of near neighbours in their E+A sample. Also, Blake et al. (2004) find a significant portion of their E+A sample exhibit tidal tails and merger morphologies and the sample is made up of predominantly E/S0 galaxies, hence they conclude that major mergers are an important formation process for E+As. We then conclude that a sub-sample of our starbursts are likely to evolve into E+A galaxies after the rapid star formation has consumed the available gas.

It is worth noting some caveats to our conclusions. The first is the 2dFGRS fibre size, which is 2 arcsec in diameter. This corresponds to 4kpc at $z=0.11$, hence the covering fraction of the fibre is in general much smaller than the average galaxy size. Studies of aperture effects have shown that measured properties such as corrected SFR and metallicity are affected when the covering fraction of a 2 arcsec

fibre is < 20 per cent, which corresponds to a redshift of $z=0.06$ for galaxies with similar properties to those in the Near Field Galaxy Survey (Kewley et al. 2005). Thus we should expect our SFRTOT sample to have SFR overestimated for $z < 0.06$. This effect is somewhat nullified by the fact that we select our sample from the most extreme galaxies per redshift bin. The effect should also be negligible in the SFRNORM sample due to two main reasons. The first being this sample is dominated by dwarfs, and indeed the distribution of diameters derived from SSS parameters peaks at $\sim 3\text{kpc}$, hence the covering fraction drops below 20 per cent at around $z=0.035$, affecting some 35 per cent of our SFRNORM sample. The second is our SFRNORM measurements are based on $W_{H\alpha}$, which is a relative quantity for which we see minimal trends out to $z = 0.18$. The second caveat comes from the fibre positioning in the 2dFGRS survey. The fibres are most likely to be placed at the approximate centre of the galaxy, thus if the covering fraction is small, we only receive light from the central regions meaning we are biased to selecting nuclear starburst galaxies. This may mean we miss particular types of starburst galaxies which have non-nucleated starbursts, eg., those with bursts triggered by ram-pressure from the ICM where the burst is expected in the galaxy outskirts, or those where the burst is triggered by gas sloshing. Follow up long-slit spectroscopy of a sub-sample of starburst galaxies will allow us to decipher how much these aperture effects should bias our results.

Clearly, from this study it can be concluded that a large fraction of starburst are triggered by some merger/interaction event. Of particular interest are those galaxies that show no evidence for interaction. Follow up studies of these galaxies including high resolution optical imaging (for morphological analysis), spatially resolved spectroscopy (for mapping out the star forming regions across the galaxy and measuring stellar kinematics) and HI imaging (for constraining gas dynamics) will allow us to decipher whether the triggering mechanism is internal or external in these starbursts.

8 ACKNOWLEDGMENTS

We acknowledge financial support from the Australian Research Council through a Discovery Project grant held throughout the course if this work. MSO was also supported by an Australian Postgraduate Award. This paper would not be possible without the 2dFGRS data collected at the Anglo-Australian Observatory (AAO). We thank 2dFGRS team and the staff at the AAO for making this study possible.

REFERENCES

- Baldwin J., Phillips M. and Terlevich R., 1981, PASP, 93, 5 (BPT)
- Balogh M. L., Morris S. L., Yee H.K.C., Carlberg R.G., Ellingson E., 1999, ApJ, 527, 54
- Barton, E.J., Geller M.J. & Kenyon S.J., 2000, ApJ, 530, 660
- Bekki K., 1999, ApJ, 510, L15

- Bekki K. 2001a, ApJ, 546, 189
 Bekki K., Shioya Y., Couch W.J., 2001b, ApJ, 547, 17
 Bekki K. & Couch W.J., 2001, ApJ, 596, L13
 Blake C. et al., 2004, MNRAS, 355, 713
 Blake C., Pope A., Scott D., Mobasher B., 2006, MNRAS, 368, 732
 Blanton M.R. et al., 2003, ApJ, 592, 819
 Butcher H.R., Oemler A., 1978, ApJ, 219, 18
 Brosch N., Almoznino E., Heller A.B., 2004, MNRAS, 349, 357
 Couch W.J. & Sharples R.M., 1987, MNRAS, 229, 423
 Carlberg R.G., Yee H.K.C., Ellingson E., 1997, ApJ, 478, 462
 Cross N.J.G., Driver S.P., Liske J., Lemon D.J., Peacock J.A., Cole S., Norberg P., Sutherland W.J., 2004, MNRAS, 349, 576
 Dahari O., 1984, ApJ, 89, 966
 De Propris R., 2002, MNRAS, 329, 87
 Efstathiou G., Ellis R.S., Peterson B.A., 1988, MNRAS, 229, 423
 Eke V.R. et al. (the 2dFGRS team), 2004a, MNRAS, 348, 866
 Eke V.R. et al. (the 2dFGRS team), 2004b, MNRAS, 355, 769
 Freedman Woods D., Geller M.J., Barton E.J., 2006, AJ, 132, 197
 Gerola H., Seiden P.E., Schulman L.S., 1980, ApJ, 242, 517
 Goto T., 2005, MNRAS, 357, 937
 Hambly N.C., MacGillivray H. T., Read M. A., Tritton S. B., Thomson E. B., Kelly B. D., Morgan D. H., Smith R. E., Driver S. P., Williamson J., Parker Q. A., Hawkins M. R. S., Williams P. M., Lawrence, A., 2001, MNRAS, 326, 1279
 Hopkins A.M., Miller C.J., Nichol R.C., Connolly A.J., Bernardi M., Gómez P.L., Goto T., Tremonti C.A., Brinkmann J., Ivezić Ž., Lamb D.Q., 2003, ApJ, 599, 971
 Jerjen H., Tammann G.A., 1997, A&A, 321, 713
 Kauffmann G., Heckman T.M., Tremonti C., Brinchmann J., Charlot S., White, S.D.M., Ridgway S.E., Brinkmann J., Fukugita M., Hall P.B., Ivezić Ž., Richards G.T., Schneider D.P., 2003, MNRAS, 346, 1055
 Kennicutt R. C., 1993, ApJ, 272, 54
 Kennicutt R. C., Tamblyn P., Congdon C. E., 1994, ApJ, 435, 22
 Kennicutt R.C., 1998, An. Rev. Astron. Astrophys., 36, 189
 Kennicutt R.C., Lee J.C., Akiyama S., Funes J.G., Sakai S., 2005, AIP Conf. Proc. 783: The Evolution of Starbursts, 783, 3
 Kewley L.J., Jansen R.A., Geller M.J., 2005, PASP, 117, 227
 Kobulnicky H.A., Kennicutt Jr. R.C., Pizagno J.L., 1999, ApJ, 514, 544
 Lambas D.G., Tissera P.B., Sol Alonso M., Coldwell G., 2003, MNRAS, 346, 1189
 Landy S.D., Szalay A.S., 1993, ApJ, 412, 64
 Lewis I. et al., 2002, MNRAS, 334, 673
 Maddox S.J., Efstathiou G., Sutherland W.J., Loveday J., 1990a, MNRAS, 242, 43p
 Maddox S.J., Efstathiou G., Sutherland W.J., Loveday J., 1990b, MNRAS, 243, 692
 Maddox S.J., Efstathiou G., Sutherland W.J., 1990c, MNRAS, 246, 433
 Maddox S.J., Efstathiou G., Sutherland W.J., 1996, MNRAS, 283, 1227
 Madgwick D.S. et al. (the 2dFGRS team), 2003, MNRAS, 344, 847
 Madgwick D.S. et al. (the 2dFGRS team), 2002, MNRAS, 333, 133
 Mateus A., Sodre L., 2004, MNRAS, 349, 1251
 Mihos J.C., Hernquist L., 1996, ApJ, 464, 641
 Niklas, S., Klein U., Weilebinski R., 1997, A&A, 322, 18
 Nikolic B., Cullen H., Alexander P., 2004, MNRAS, 355, 874
 Norberg P. et al., 2002, MNRAS, 336, 907
 Noeske K.G., Iglesias-Páramo, Vílchez J.M., Papaderos P., Fricke K.J., 2001, A&A, 371, 806
 Papaderos P., Loose H.-H., Fricke K.J., Thuan T.X., 1996, A&A, 314, 59
 Pustilnik S.A., Kniazev A.Y., Lipovetsky V.A., Ugryumov A.V., 2001, A&A, 373, 24
 Rubin V.C., Kent Ford W., Thonnard N., Burstein D., 1982, ApJ, 261, 439
 Sanders D.B. & Mirabel I.F., 1996, Ann. Rev. Astro. Astrophys., 34, 749
 Scalo, J.M., 1986, Fund. Cos. Phys., 11, 1
 Sullivan M., Mobasher B., Chan B., Cram L., Ellis R., Treyer M., Hopkins A., 2001, ApJ, 558, 72
 Taylor C.L., 1997, ApJ, 480, 524
 Thuan T.X. & Martin G.E., 1981, ApJ, 247, 823
 Veilleux S., Osterbrock D., 1987, ApJ, 63, 310
 Wild V. et al., 2004, MNRAS, 356, 247

APPENDIX A: CORRECTING FOR THE BRIGHTENING IN THE r_F MAGNITUDE DUE TO A STARBURST

During the near neighbour analysis, we assumed a constant mass to light ratio for the starburst and near neighbour galaxies. This assumption is subject to errors caused by the brightening of the r_F magnitude due to the burst of star formation occurring in the starburst, hence, we attempt to correct for this using the stellar population synthesis models of Bruzual & Charlot (2003). Briefly, we superpose a 300Myr burst of constant star formation onto an underlying 11Gyr old stellar population which has an exponentially decaying star formation rate with an e-folding time of $\tau = 3\text{Gyrs}$ beginning 1Gyr after the Big Bang. There are two main inputs for the models which we can derive from our spectra - the burst strength (ie. the ratio of the mass of stars formed in the burst to the underlying stellar mass) and the metallicity.

The burst strength was determined from the median EW($H\alpha$) of the starburst sample of interest (for the SFRNORM the median $W_{H\alpha} = 145$ and for the SFR-TOT sample the median $W_{H\alpha} = 67$). The $W_{H\alpha}$ correlates strongly with the 'b' parameter (Scalo 1986) which measures the ratio of the current star formation rate to the mean past star formation rate (Kennicutt et al. 1994). We estimate the equivalent b parameters for the median $H\alpha$ EWs are 2.5 and 1 for the SFRNORM and SFR-TOT samples, respectively using Table 1. from Kennicutt et al. (1994). Multiplying the 'b' parameter by the ratio of the assumed ages of the starburst (300Myr) and underlying stellar population (11Gyr), we can derive the burst strength. We derive burst strengths

of 7 and 3 per cent for the SFRNORM and SFRTOT samples, respectively.

To determine the metallicity, we obtain the gas phase oxygen abundances using the EWs of OIII(4959,5007), OII(3737) and H β to derive the R₂₃ parameter (see Kobulnicky et al. 2003) which in turn is used to determine the oxygen abundance, 12+log(O/H) (see Kobulnicky et al. 1999). The degeneracy between the R₂₃ parameter and its relation to the oxygen abundance is broken by defining metal rich galaxies as those with $\log([\text{NII}]\lambda 6584/\text{H}\alpha) \geq -1$ and metal poor as those with $\log([\text{NII}]\lambda 6584/\text{H}\alpha) < -1$ (see Lamaraille et al. 2004 and references therein for a more thorough discussion). Eqns. (8) and (9) of Kobulnicky et al. (1999) are then used to determine the 12+log(O/H). We find mean oxygen abundances of 20 and 60 per cent of the solar value for the SFRNORM and SFRTOT samples, respectively. Hence we use the corresponding metallicities in the BC03 models. We find that, on average, a galaxy in the SFRNORM sample is brightened by ~ 0.83 mag and a galaxy in the SFRTOT sample is brightened by ~ 0.44 mag in the r_{F} band due to a starburst. Thus, for the SFRNORM sample $r_{\text{F}}^* = r_{\text{F}} + 0.83$ and for the SFRTOT sample, $r_{\text{F}}^* = r_{\text{F}} + 0.44$.